



United States
Department of
Agriculture

National
Agricultural
Statistics
Service



Farms, Land in Farms, and Livestock Operations 2008 Summary

February 2009

Sp Sy 4 (09)

USDA



Contents

	Page
National Summaries	
Number of Farms and Land in Farms	2
Livestock Operations	3
Number of Farms, Land in Farms, and Average Farm Size	4
Livestock Operations by Species, U.S.	
Cattle and Calves	14
Beef Cows	14
Milk Cows	15
Milk Production	15
Hogs and Pigs	16
Sheep and Goats	17
Livestock Operations by Species, State	
Cattle and Calves	18
Beef Cows	18
Milk Cows	18
Milk Production	25
Hogs and Pigs	26
Sheep and Lambs	26
Angora Goats	26
Milk Goats	26
Meat Goats	26
All Goats	26
Reliability Statement	28
Terms and Definitions	29
Farm Definition History	30
Special Note Regarding the 2007 Estimates	31
Contacts	32

2008 Number of Farms and Land in Farms Highlights

The number of farms in the United States in 2008 is estimated at 2.2 million, 0.2 percent fewer than in 2007. Total land in farms, at 919.9 million acres, decreased 1.56 million acres, or 0.2 percent, from 2007. The average farm size was 418 acres, unchanged from the previous year. The decline in the number of farms and land in farms reflects a continuing consolidation in farming operations and diversion of agricultural land to nonagricultural uses.

Farm numbers and land in farms are broken down into five economic sales classes. Farms and ranches are classified into these “sales classes” by summing their sales of agricultural products and government program payments. Sales class breaks occur at \$10,000, \$100,000, \$250,000, and \$500,000.

Farm numbers declined slightly in the \$1,000-\$9,999, \$10,000-\$99,999, and \$100,000-\$249,999 sales classes. Farm numbers rose slightly in the two largest sales classes. Because of strong commodity prices and rising value of sales many farms and ranches near the top of their sales class in 2007 may have moved into the next higher sales class in 2008 without expanding their operations.

The largest percentage changes from 2007 occurred in the smallest and largest sales classes. Farm numbers declined 0.5 percent, to 1.22 million farms, in the \$1,000-\$9,999 sales class. Meanwhile, the number of farms in the \$500,000 and over sales class increased by 4.8 percent to 126,000 farms. The number of farms with less than \$100,000 in sales fell 0.6 percent from 2007 while the number of farms with \$100,000 or more in sales rose 1.6 percent.

Land in farms also shifted from lower sales classes to higher sales classes. In the \$1,000-\$9,999 sales class, land in farms dropped 1.1 percent, to 106.7 million acres, while land operated by farms in the largest sales class, \$500,000 & over in sales, increased 2.4 percent, to 293.1 million acres.

The **average farm size** was unchanged in 2008. However, average farm sizes declined in some of the sales classes. This may have been due to smaller farms moving up to higher sales classes.

This report also contains estimates of farm numbers and land in farms for **Puerto Rico**. The number of farms with sales of \$1,000 or more in Puerto Rico was 11,200 in 2008, down 200 farms from 2007. Land in farms, at 470,000 acres, is down 20,000 acres from the previous year. The average farm size in Puerto Rico in 2008 was estimated at 42 acres.

Special Note

Number of farms and land in farms were revised for 2007 at the U.S. and State level based on the Census of Agriculture. For more information regarding revisions to the 2007 estimates please see page 31. Historical publication statistical bulletin, NASS-SB1018 (04), with revisions for 2003-2007 will be published February 25, 2009.

Livestock Operations 2008 Summary

The number of operations with cattle totaled 956,500 for 2008, down 1 percent from 2007. Beef cow operations in 2008, at 757,000, were also down 1 percent from last year. The number of milk cow operations for 2008 totaled 67,000, down 4 percent from 2007.

The three operation classes: cattle, beef cows, and milk cows, are classified into size groups independently. Therefore, it is possible to have more beef cow operations in a particular size group than cattle operations. As an example, an operator with 75 cattle and 40 beef cows would be classified in the 50-99 size group for cattle and 1-49 size group for beef cows.

The number of operations with hogs totaled 73,150 for 2008, down 3 percent from 2007. Places with 2,000 or more head accounted for 85.1 percent of the inventory.

The number of operations with sheep totaled 82,330 for 2008, down 1 percent from 2007. Of all sheep operations that include breeding sheep, 92.5 percent were comprised of 1-99 head, 6.2 percent had 100-499 head, and the remaining 1.3 percent were operations with 500 head or more. Operations with 1-99 head account for 32.6 percent of the inventory, 100-499 head account for 22.7 percent of the inventory, and 500+ head account for 44.7 percent of the inventory.

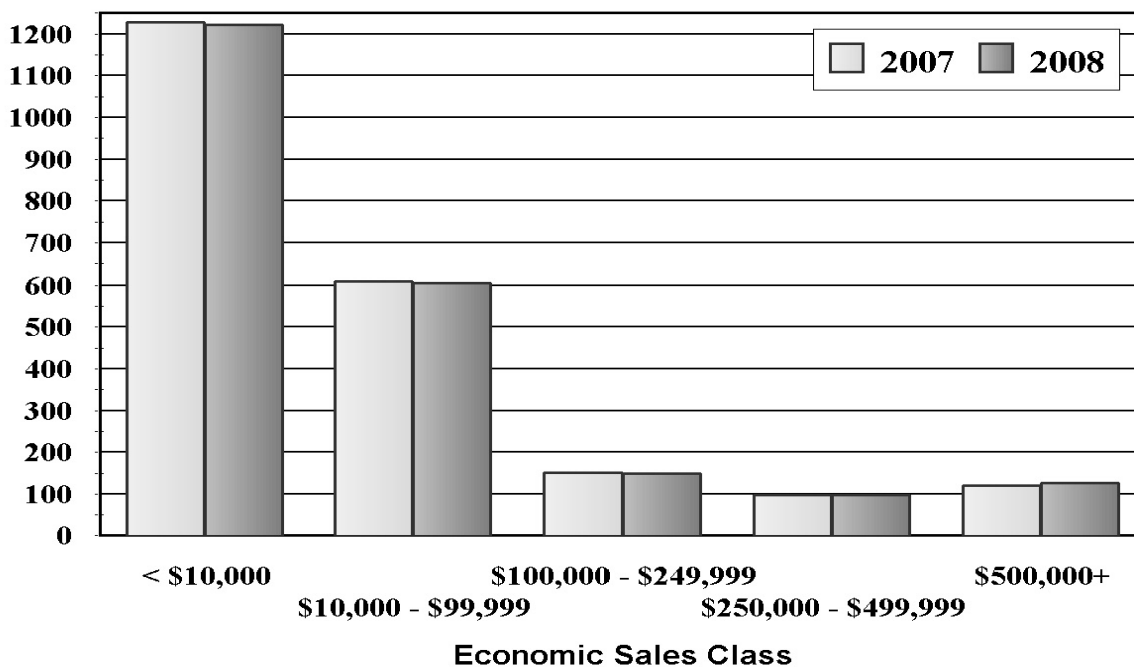
The number of operations with goats totaled 149,800 for 2008, up 4 percent from a year earlier. Angora goat operations totaled 6,500, down 10 percent from 2007. Milk goat operations totaled 29,000, up 6 percent from 2007. Meat goat operations totaled 128,800, up 5 percent from a year earlier. Total goat operations will be equal to or less than the sum of angora, milk and meat because places which own more than one goat type count as only one operation.

Special Note

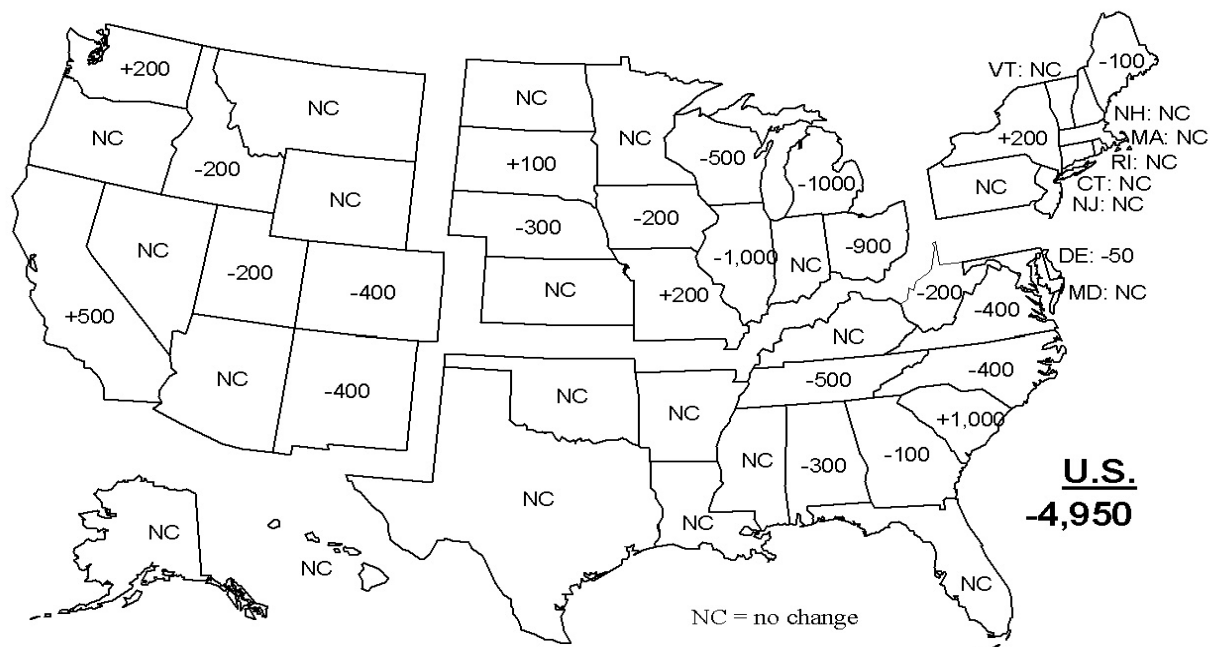
The number of operations by State will no longer be published on an annual basis. State level numbers will only be published in conjunction with the Census of Agriculture every five years. The number of operations at the U.S. level will continue to be published on an annual basis. Cattle, hogs, sheep, and goat operations for 2007 were revised at the U.S. and State level based on the Census of Agriculture. The reference date for operation estimates is December 31 beginning with the 2007 estimates. This is a change from the previous definition of an operation as any place having one or more head of a specie on hand at any time during the year. Annual end of year surveys are used to establish current year estimates. Historical publication statistical bulletin, NASS-SB1021, with revisions for 2003-2007 livestock operation estimates will be published March 5, 2009.

U. S. Number of Farms by Economic Sales Class, 2007 - 2008

Thousands of farms

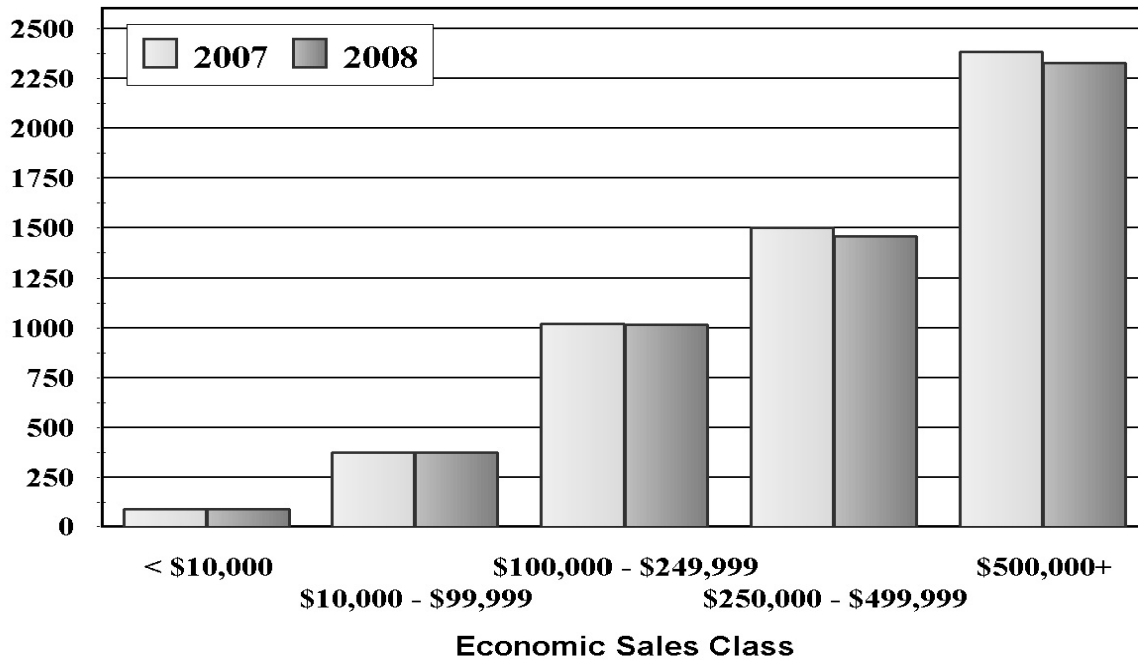


Change in Farm Numbers Since 2007, By State

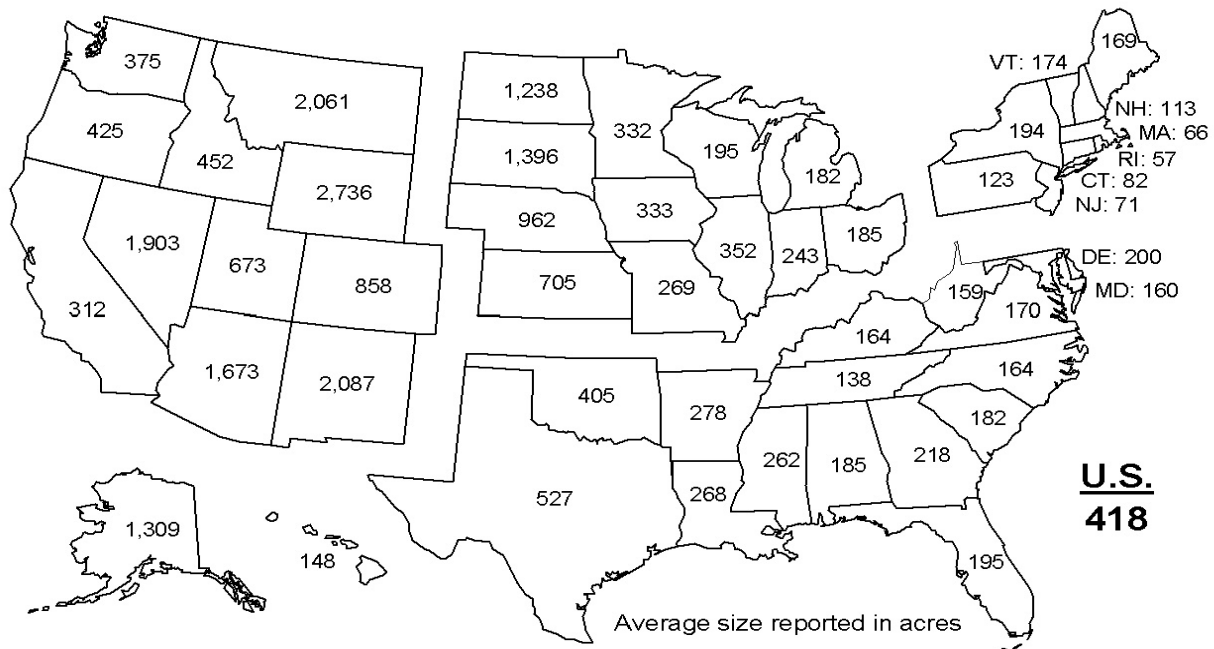


U. S. Average Farm Size by Economic Sales Class, 2007 - 2008

Acres

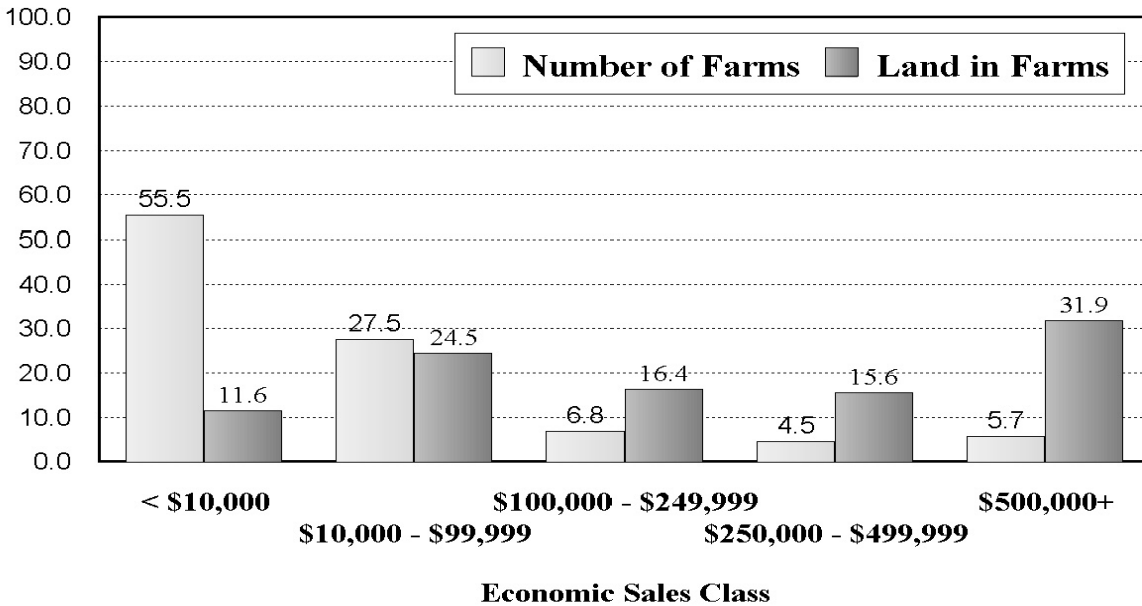


Average Farm Size by State, 2008

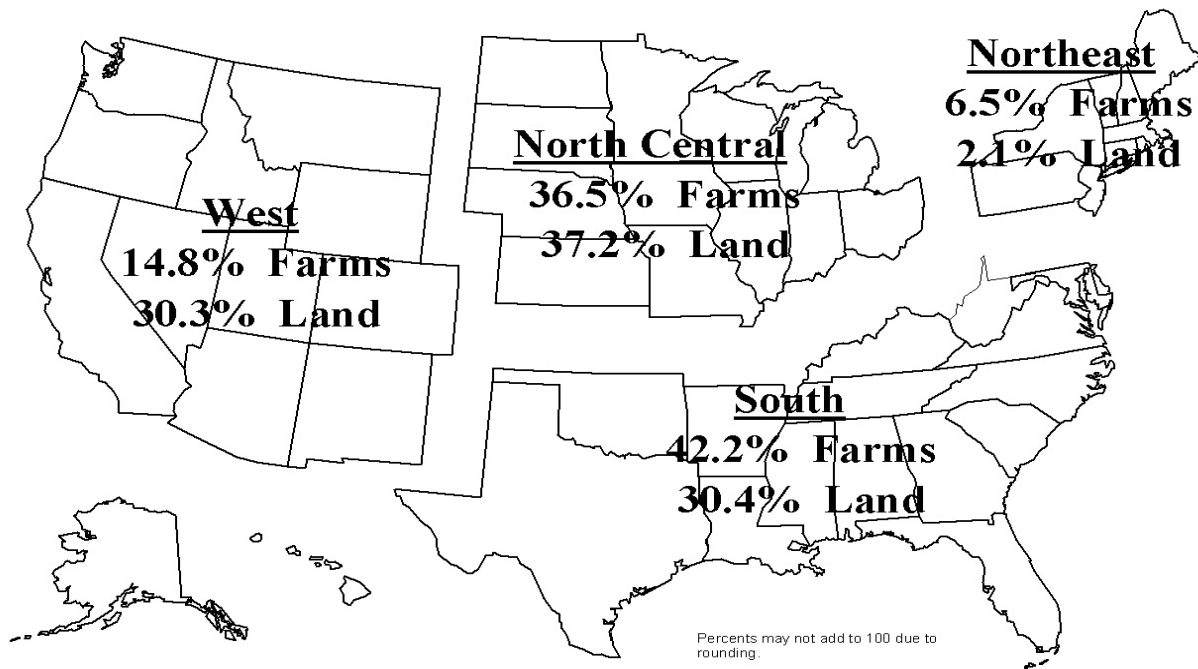


U.S. Number of Farms and Land in Farms Percent of Total by Economic Sales Class, 2008

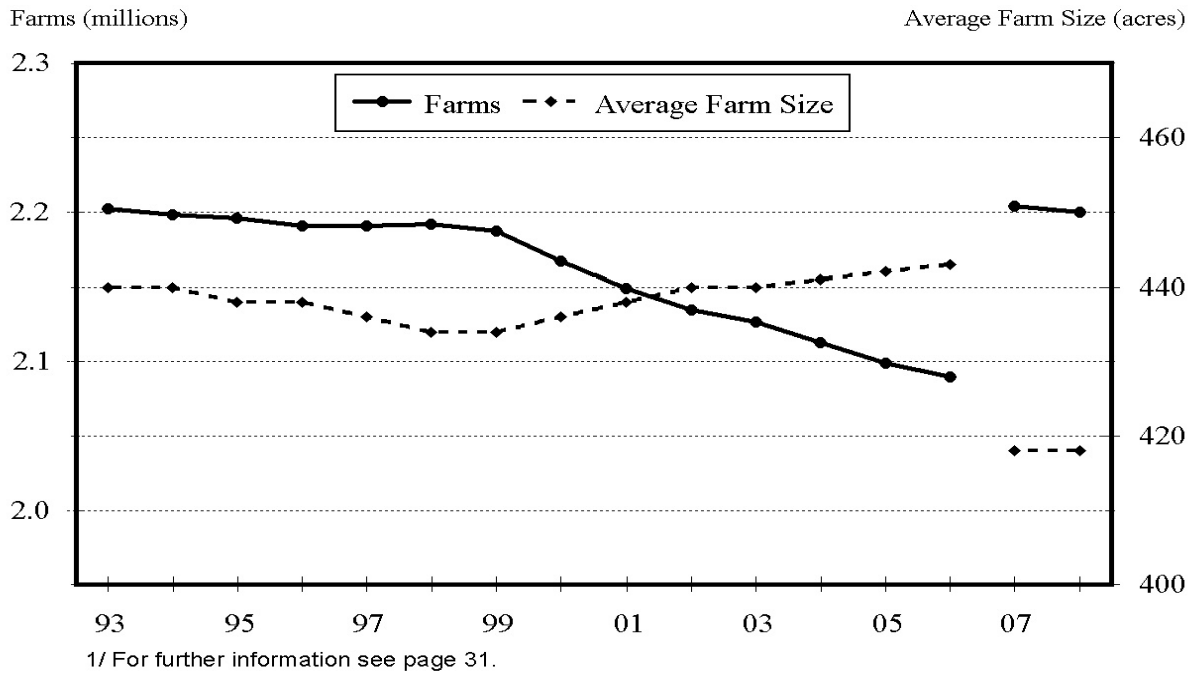
Percent of Total



Number of Farms and Land in Farms Percent of Total by Region, 2008



Number of Farms and Average Farm Size United States, 1993 - 2008 ¹



Point Farms: United States, 2002 - 2008 ¹

Year	Percent of Total	
	Farms ²	Land ²
2002	19.0	3.0
2003	18.0	3.0
2004	17.0	2.5
2005	18.0	2.5
2006	19.0	2.7
2007	22.0	3.0
2008	17.0	2.8

¹ Percent of farms and land in farms for places having less than \$1,000 of reported sales, but with sufficient crops and/or livestock to normally have sales of at least \$1,000.

² Revised.

**Number of Farms, Land in Farms, and Average Farm Size:
United States, 1998-2008 ¹**

Year	Number of Farms	Land in Farms ²	Average Farm Size
	<i>Number</i>	<i>1,000 Acres</i>	<i>Acres</i>
1998	2,192,330	952,080	434
1999	2,187,280	948,460	434
2000	2,166,780	945,080	436
2001	2,148,630	942,070	438
2002	2,135,360	940,300	440
2003	2,126,860	936,750	440
2004	2,112,970	932,260	441
2005	2,098,690	927,940	442
2006	2,088,790	925,790	443
2007 ²	2,204,950	921,460	418
2008	2,200,000	919,900	418

¹ A farm is any establishment from which \$1,000 or more of agricultural products were sold or would normally be sold during the year.

² Revised.

**Percent of Farms and Land in Farms, and Average Farm Size: By Economic Sales
Class, United States, 2007-2008**

Economic Sales Class	Percent of Total				Average Farm Size (Acres)	
	Farms		Land in Farms			
	2007 ¹	2008	2007 ¹	2008	2007 ¹	2008
\$1,000 - \$2,499	26.8	27.8	3.5	4.0	55	60
\$2,500 - \$4,999	15.4	14.4	3.2	3.3	87	96
\$5,000 - \$9,999	13.5	13.3	5.0	4.3	155	135
\$10,000 - \$24,999	12.5	12.1	6.9	6.8	230	235
\$25,000 - \$49,999	8.1	8.0	7.0	7.4	361	387
\$50,000 - \$99,999	7.0	7.4	10.9	10.3	650	582
\$100,000 - \$249,999	6.8	6.8	16.6	16.4	1,022	1,010
\$250,000 - \$499,999	4.4	4.5	15.8	15.6	1,503	1,452
\$500,000 - \$999,999	3.3	3.4	15.0	15.4	1,903	1,897
\$1,000,000 +	2.2	2.3	16.1	16.5	3,064	3,004
Total	100.0	100.0	100.0	100.0	418	418

¹ Revised.

**Number of Farms, Land in Farms, and Average Farm Size
By State, United States, and Puerto Rico 2007-2008**

State	Number of Farms		Land in Farms		Average Farm Size	
	2007 ¹	2008	2007 ¹	2008	2007 ¹	2008
	<i>Number</i>	<i>Number</i>	<i>1,000 Acres</i>	<i>1,000 Acres</i>	<i>Acres</i>	<i>Acres</i>
AL	48,800	48,500	9,000	8,950	184	185
AK	680	680	890	890	1,309	1,309
AZ	15,600	15,600	26,100	26,100	1,673	1,673
AR	49,300	49,300	13,900	13,700	282	278
CA	81,000	81,500	25,400	25,400	314	312
CO	36,900	36,500	31,400	31,300	851	858
CT	4,900	4,900	410	400	84	82
DE	2,550	2,500	510	500	200	200
FL	47,500	47,500	9,300	9,250	196	195
GA	47,900	47,800	10,300	10,400	215	218
HI	7,500	7,500	1,120	1,110	149	148
ID	25,400	25,200	11,500	11,400	453	452
IL	76,900	75,900	26,800	26,700	349	352
IN	61,000	61,000	14,800	14,800	243	243
IA	92,800	92,600	30,800	30,800	332	333
KS	65,500	65,500	46,300	46,200	707	705
KY	85,300	85,300	14,000	14,000	164	164
LA	30,000	30,000	8,100	8,050	270	268
ME	8,100	8,000	1,350	1,350	167	169
MD	12,850	12,850	2,060	2,050	160	160
MA	7,700	7,700	520	510	68	66
MI	56,000	55,000	10,000	10,000	179	182
MN	81,000	81,000	26,900	26,900	332	332
MS	42,000	42,000	11,000	11,000	262	262
MO	107,800	108,000	29,000	29,100	269	269
MT	29,500	29,500	60,900	60,800	2,064	2,061
NE	47,700	47,400	45,600	45,600	956	962
NV	3,100	3,100	5,900	5,900	1,903	1,903
NH	4,150	4,150	470	470	113	113
NJ	10,300	10,300	730	730	71	71
NM	21,000	20,600	43,200	43,000	2,057	2,087
NY	36,400	36,600	7,200	7,100	198	194
NC	52,900	52,500	8,600	8,600	163	164
ND	32,000	32,000	39,600	39,600	1,238	1,238
OH	75,900	75,000	14,000	13,900	184	185
OK	86,600	86,600	35,100	35,100	405	405
OR	38,600	38,600	16,400	16,400	425	425
PA	63,200	63,200	7,800	7,750	123	123
RI	1,220	1,220	70	70	57	57
SC	25,900	26,900	4,900	4,900	189	182
SD	31,200	31,300	43,700	43,700	1,401	1,396
TN	79,500	79,000	11,000	10,900	138	138
TX	247,500	247,500	130,400	130,400	527	527
UT	16,700	16,500	11,100	11,100	665	673
VT	7,000	7,000	1,230	1,220	176	174
VA	47,400	47,000	8,100	8,000	171	170
WA	39,300	39,500	14,900	14,800	379	375
WV	23,400	23,200	3,700	3,700	158	159
WI	78,500	78,000	15,200	15,200	194	195
WY	11,000	11,000	30,200	30,100	2,745	2,736
US	2,204,950	2,200,000	921,460	919,900	418	418
PR	11,400	11,200	490	470	43	42

¹ Revised.

**Number of Farms: Economic Sales Class by State,
Region, United States, and Puerto Rico 2007-2008**

State and Region	Economic Sales Class					
	\$1,000-\$9,999		\$10,000-\$99,999		\$100,000-\$249,999	
	2007 ¹	2008	2007 ¹	2008	2007 ¹	2008
	<i>Number</i>	<i>Number</i>	<i>Number</i>	<i>Number</i>	<i>Number</i>	<i>Number</i>
Northeast						
CT ²	3,100	3,050				
ME ²	5,300	5,200				
MA ²	4,800	4,800				
NH ²	2,900	2,900				
NJ ²	6,700	6,700				
NY	18,800	18,700	10,700	10,800	3,300	3,100
PA	37,000	37,000	15,500	15,500	5,600	5,600
RI ²	750	740				
VT ²	4,000	4,000				
Oth Sts ³			11,010	11,060	2,220	2,220
Total	83,350	83,090	37,210	37,360	11,120	10,920
North Central						
IL	33,700	33,500	19,400	17,400	9,100	8,100
IN	32,000	31,700	16,000	16,000	5,200	5,150
IA	30,300	30,200	28,500	28,500	14,300	14,100
KS	28,300	28,300	22,500	22,500	6,600	6,600
MI	33,100	32,300	14,800	14,500	3,500	3,600
MN	36,500	36,500	21,900	21,900	9,500	9,400
MO	58,000	57,700	37,400	38,000	6,000	5,700
NE	13,000	12,300	14,700	14,200	8,000	7,600
ND	10,600	10,600	9,400	9,400	4,400	4,300
OH	40,700	40,300	22,800	22,700	5,800	5,500
SD	9,200	9,400	9,700	9,600	5,500	5,200
WI	40,900	39,000	20,700	20,500	8,600	9,300
Total	366,300	361,800	237,800	235,200	86,500	84,550
South						
AL	32,100	31,000	11,800	12,500	1,100	1,300
AR	27,700	27,900	13,400	13,200	1,600	1,600
DE ²	1,000	1,000				
FL	29,500	29,500	12,700	12,700	2,100	2,100
GA	30,400	30,200	10,500	10,000	2,100	2,500
KY	54,000	54,000	25,200	25,200	3,000	2,900
LA	18,700	18,700	7,900	7,900	1,100	1,100
MD ²	7,100	7,100				
MS	27,400	27,400	9,900	9,900	1,050	1,050
NC	32,900	32,700	11,500	11,300	2,000	2,000
OK	51,000	51,000	28,000	28,000	3,900	3,800
SC	18,500	19,500	5,500	5,400	550	600
TN	55,800	55,900	19,800	19,100	1,650	1,650
TX	163,800	163,800	65,100	65,100	7,600	7,500
VA	30,200	30,000	13,400	13,300	1,450	1,450
WV ²	18,400	18,400				
Oth Sts ⁴			8,250	8,030	1,210	1,210
Total	598,500	598,100	242,950	241,630	30,410	30,760
West						
AK ²	360	360				
AZ ²	12,000	12,000				
CA	35,300	35,500	26,300	26,600	6,700	6,500
CO	21,000	20,600	10,600	10,400	2,500	2,600
HI ²	4,600	4,600				
ID	14,100	13,300	6,800	7,000	1,700	1,900
MT	13,100	13,100	9,600	9,400	3,600	3,700
NV ²	1,650	1,650				
NM	14,100	13,800	5,100	5,000	800	800
OR	24,600	24,400	9,200	8,900	2,000	2,300
UT	10,300	10,100	4,700	4,700	840	840
WA	24,100	24,400	9,000	8,900	2,000	2,000
WY ²	5,200	5,200				
Oth Sts ⁵			9,410	9,410	2,130	2,130
Total	180,410	179,010	90,710	90,310	22,270	22,770
US	1,228,560	1,222,000	608,670	604,500	150,300	149,000
PR	7,300	7,200	3,100	3,000	500	500

--continued

**Number of Farms: Economic Sales Class by State,
Region, United States, and Puerto Rico 2007-2008 (continued)**

State and Region	Economic Sales Class					
	\$250,000-\$499,999		\$500,000 & Over		Total	
	2007 ¹	2008	2007 ¹	2008	2007 ¹	2008
	<i>Number</i>	<i>Number</i>	<i>Number</i>	<i>Number</i>	<i>Number</i>	<i>Number</i>
Northeast						
CT ²					4,900	4,900
ME ²					8,100	8,000
MA ²					7,700	7,700
NH ²					4,150	4,150
NJ ²					10,300	10,300
NY	1,800	1,700	1,800	2,300	36,400	36,600
PA	2,800	2,800	2,300	2,300	63,200	63,200
RI ²					1,220	1,220
VT ²					7,000	7,000
Oth Sts ³	1,230	1,220	1,360	1,380		
Total	5,830	5,720	5,460	5,980	142,970	143,070
North Central						
IL	7,200	7,900	7,500	9,000	76,900	75,900
IN	3,500	3,600	4,300	4,550	61,000	61,000
IA	9,800	9,800	9,900	10,000	92,800	92,600
KS	3,900	3,900	4,200	4,200	65,500	65,500
MI	2,100	2,100	2,500	2,500	56,000	55,000
MN	6,400	6,400	6,700	6,800	81,000	81,000
MO	3,000	2,900	3,400	3,700	107,800	108,000
NE	5,800	6,000	6,200	7,300	47,700	47,400
ND	3,700	3,700	3,900	4,000	32,000	32,000
OH	3,400	3,300	3,200	3,200	75,900	75,000
SD	3,800	3,900	3,000	3,200	31,200	31,300
WI	4,800	5,200	3,500	4,000	78,500	78,000
Total	57,400	58,700	58,300	62,450	806,300	802,700
South						
AL	1,400	1,400	2,400	2,300	48,800	48,500
AR	1,900	1,700	4,700	4,900	49,300	49,300
DE ²					2,550	2,500
FL	1,100	1,100	2,100	2,100	47,500	47,500
GA	1,400	1,600	3,500	3,500	47,900	47,800
KY	1,450	1,400	1,650	1,800	85,300	85,300
LA	800	800	1,500	1,500	30,000	30,000
MD ²					12,850	12,850
MS	900	900	2,750	2,750	42,000	42,000
NC	2,500	2,500	4,000	4,000	52,900	52,500
OK	1,800	1,800	1,900	2,000	86,600	86,600
SC	350	300	1,000	1,100	25,900	26,900
TN	950	950	1,300	1,400	79,500	79,000
TX	4,500	4,500	6,500	6,600	247,500	247,500
VA	950	950	1,400	1,300	47,400	47,000
WV ²					23,400	23,200
Oth Sts ⁴	870	850	1,970	1,960		
Total	20,870	20,750	36,670	37,210	929,400	928,450
West						
AK ²					680	680
AZ ²					15,600	15,600
CA	4,000	4,000	8,700	8,900	81,000	81,500
CO	1,300	1,200	1,500	1,700	36,900	36,500
HI ²					7,500	7,500
ID	1,100	1,200	1,700	1,800	25,400	25,200
MT	2,000	2,100	1,200	1,200	29,500	29,500
NV ²					3,100	3,100
NM	400	400	600	600	21,000	20,600
OR	1,100	1,200	1,700	1,800	38,600	38,600
UT	410	410	450	450	16,700	16,500
WA	1,700	1,700	2,500	2,500	39,300	39,500
WY ²					11,000	11,000
Oth Sts ⁵	1,120	1,120	1,410	1,410		
Total	13,130	13,330	19,760	20,360	326,280	325,780
US	97,230	98,500	120,190	126,000	2,204,950	2,200,000
PR	250	250	250	250	11,400	11,200

¹ Revised.

² Estimates not available for all sales classes.

³ CT, ME, MA, NH, NJ, RI, and VT.

⁴ DE, MD, and WV.

⁵ AK, AZ, HI, NV, and WY.

**Land in Farms: Economic Sales Class by State,
Region, United States, and Puerto Rico 2007-2008**

State and Region	Economic Sales Class					
	\$1,000-\$9,999		\$10,000-\$99,999		\$100,000-\$249,999	
	2007 ¹	2008	2007 ¹	2008	2007 ¹	2008
	<i>1,000 Acres</i>	<i>1,000 Acres</i>	<i>1,000 Acres</i>	<i>1,000 Acres</i>	<i>1,000 Acres</i>	<i>1,000 Acres</i>
Northeast						
CT ²	140	130				
ME ²	480	480				
MA ²	210	210				
NH ²	230	230				
NJ ²	180	180				
NY	1,600	1,400	1,800	1,700	1,000	960
PA	2,400	2,400	2,050	2,050	1,200	1,150
RI ²	30	30				
VT ²	350	340				
Oth Sts ³			1,260	1,250	487	490
Total	5,620	5,400	5,110	5,000	2,687	2,600
North Central						
IL	1,500	1,500	2,900	2,300	3,800	3,300
IN	1,300	1,300	2,100	2,100	1,900	1,900
IA	1,700	1,700	4,700	4,700	5,400	5,400
KS	3,300	3,200	9,900	9,900	8,300	8,300
MI	1,850	1,800	2,100	2,000	1,350	1,400
MN	3,200	3,200	4,800	4,800	4,200	4,200
MO	5,100	5,000	10,200	10,400	4,200	3,900
NE	1,400	1,400	6,400	6,200	8,600	8,300
ND	2,000	2,000	6,300	6,200	7,000	6,900
OH	2,100	2,000	3,200	3,200	2,200	2,200
SD	1,600	1,600	7,500	7,300	10,100	9,400
WI	3,100	2,700	3,300	3,300	2,600	2,700
Total	28,150	27,400	63,400	62,400	59,650	57,900
South						
AL	3,100	3,000	3,100	3,100	800	800
AR	2,300	2,300	3,300	3,150	1,000	950
DE ²	30	30				
FL	1,400	1,400	2,000	1,950	900	900
GA	3,000	3,200	2,500	2,350	1,100	1,000
KY	4,390	4,400	5,040	5,010	1,330	1,320
LA	1,400	1,400	2,000	1,950	900	900
MD ²	400	400				
MS	3,500	3,500	2,600	2,600	1,000	1,000
NC	2,000	2,000	1,700	1,650	750	800
OK	6,100	6,000	12,600	12,600	6,100	6,100
SC	1,800	1,900	1,450	1,200	400	400
TN	3,650	3,750	3,900	3,700	900	900
TX	18,800	18,800	43,500	43,500	20,900	20,800
VA	2,350	2,300	3,000	2,900	850	900
WV ²	1,960	1,920				
Oth Sts ⁴			1,810	1,840	510	530
Total	56,180	56,300	88,500	87,500	37,440	37,300
West						
AK ²	290	270				
AZ ²	750	750				
CA	1,800	1,800	5,000	5,000	3,700	3,600
CO	2,900	2,700	8,600	8,400	6,000	5,900
HI ²	80	80				
ID	950	950	2,500	2,400	1,950	1,950
MT	2,500	2,500	12,400	12,000	15,400	15,400
NV ²	200	200				
NM	3,100	3,000	11,300	11,300	8,300	8,400
OR	1,700	1,700	3,400	3,400	3,100	3,100
UT	850	850	2,250	2,250	1,500	1,500
WA	1,300	1,300	3,200	3,100	1,800	1,800
WY ²	1,500	1,500				
Oth Sts ⁵			22,560	22,550	11,880	11,850
Total	17,920	17,600	71,210	70,400	53,630	53,500
US	107,870	106,700	228,220	225,300	153,407	151,300
PR	130	120	170	160	70	70

--continued

**Land in Farms: Economic Sales Class by State,
Region, United States, and Puerto Rico 2007-2008 (continued)**

State and Region	Economic Sales Class					
	\$250,000-\$499,999		\$500,000 & Over		Total	
	2007 ¹	2008	2007 ¹	2008	2007 ¹	2008
	<i>1,000 Acres</i>	<i>1,000 Acres</i>	<i>1,000 Acres</i>	<i>1,000 Acres</i>	<i>1,000 Acres</i>	<i>1,000 Acres</i>
Northeast						
CT ²					410	400
ME ²					1,350	1,350
MA ²					520	510
NH ²					470	470
NJ ²					730	730
NY	900	850	1,900	2,190	7,200	7,100
PA	950	900	1,200	1,250	7,800	7,750
RI ²					70	70
VT ²					1,230	1,220
Oth Sts ³	445	450	968	960		
Total	2,295	2,200	4,068	4,400	19,780	19,600
North Central						
IL	5,600	4,800	13,000	14,800	26,800	26,700
IN	2,500	2,500	7,000	7,000	14,800	14,800
IA	6,900	6,900	12,100	12,100	30,800	30,800
KS	8,400	8,400	16,400	16,400	46,300	46,200
MI	1,400	1,400	3,300	3,400	10,000	10,000
MN	4,800	4,800	9,900	9,900	26,900	26,900
MO	3,500	3,200	6,000	6,600	29,000	29,100
NE	10,200	9,100	19,000	20,600	45,600	45,600
ND	8,200	8,200	16,100	16,300	39,600	39,600
OH	2,400	2,400	4,100	4,100	14,000	13,900
SD	10,100	10,400	14,400	15,000	43,700	43,700
WI	2,300	2,600	3,900	3,900	15,200	15,200
Total	66,300	64,700	125,200	130,100	342,700	342,500
South						
AL	700	700	1,300	1,350	9,000	8,950
AR	1,500	1,400	5,800	5,900	13,900	13,700
DE ²					510	500
FL	900	900	4,100	4,100	9,300	9,250
GA	900	950	2,800	2,900	10,300	10,400
KY	1,040	1,020	2,200	2,250	14,000	14,000
LA	900	900	2,900	2,900	8,100	8,050
MD ²					2,060	2,050
MS	950	900	2,950	3,000	11,000	11,000
NC	1,150	1,150	3,000	3,000	8,600	8,600
OK	4,300	4,300	6,000	6,100	35,100	35,100
SC	300	300	950	1,100	4,900	4,900
TN	800	800	1,750	1,750	11,000	10,900
TX	15,300	15,300	31,900	32,000	130,400	130,400
VA	650	650	1,250	1,250	8,100	8,000
WV ²					3,700	3,700
Oth Sts ⁴	440	430	1,120	1,100		
Total	29,830	29,700	68,020	68,700	279,970	279,500
West						
AK ²					890	890
AZ ²					26,100	26,100
CA	2,900	2,900	12,000	12,100	25,400	25,400
CO	6,100	5,600	7,800	8,700	31,400	31,300
HI ²					1,120	1,110
ID	1,400	1,300	4,700	4,800	11,500	11,400
MT	14,100	14,400	16,500	16,500	60,900	60,800
NV ²					5,900	5,900
NM	7,800	7,700	12,700	12,600	43,200	43,000
OR	2,600	2,600	5,600	5,600	16,400	16,400
UT	1,200	1,200	5,300	5,300	11,100	11,100
WA	2,800	2,800	5,800	5,800	14,900	14,800
WY ²					30,200	30,100
Oth Sts ⁵	8,400	8,400	18,550	18,500		
Total	47,300	46,900	88,950	89,900	279,010	278,300
US	145,725	143,500	286,238	293,100	921,460	919,900
PR	40	40	80	80	490	470

¹ Revised.

² Estimates not available for all sales classes.

³ CT, ME, MA, NH, NJ, RI, and VT.

⁴ DE, MD, and WV.

⁵ AK, AZ, HI, NV, and WY.

**Cattle and Calves: Number of Operations and Percent of Inventory
by Size Group, United States, 2007-2008**

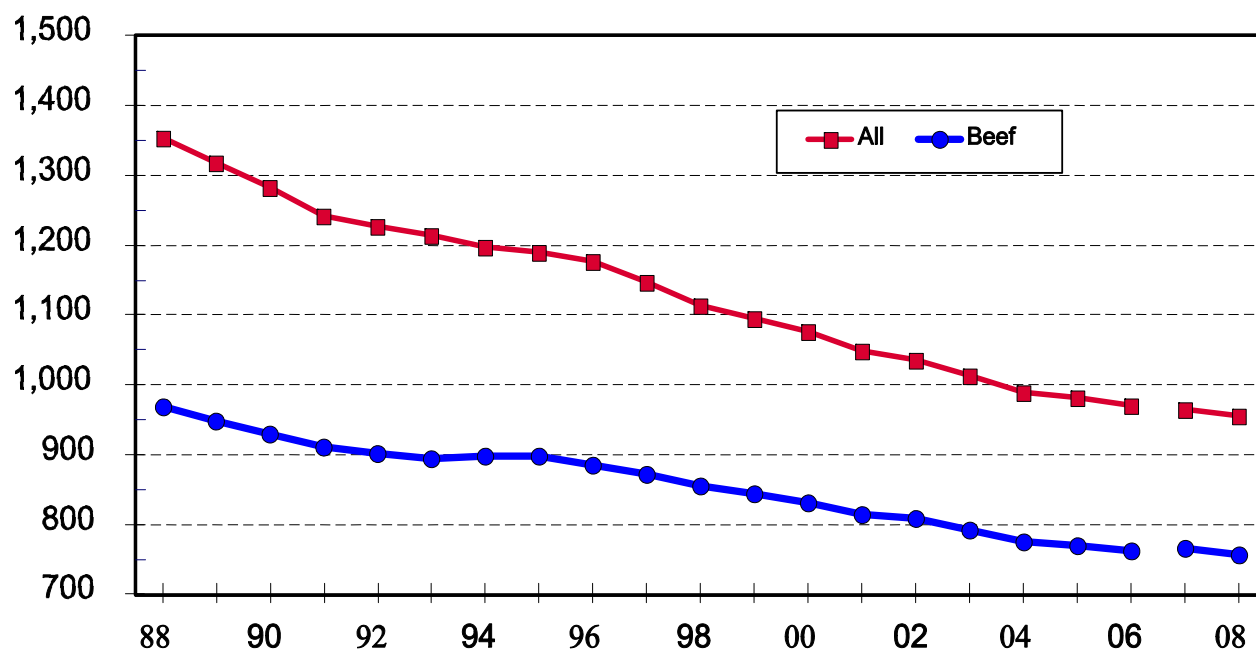
Head	Operations		Percent of Inventory	
	2007 ¹	2008	2007 ¹	2008
	<i>Number</i>	<i>Number</i>	<i>Percent</i>	<i>Percent</i>
Cattle and Calves				
1-49	646,100	646,000	11.5	11.5
50-99	137,560	133,000	9.8	9.7
100-499	151,850	147,600	31.4	31.2
500-999	19,190	19,100	13.4	13.4
1,000-1,999	6,700	6,600	9.1	9.0
2,000-4,999	3,000	3,030	8.8	8.8
5,000-9,999	650	700	4.4	4.7
10,000-19,999	250	260	3.4	3.5
20,000+	210	210	8.2	8.2
Total	965,510	956,500	100.0	100.0
Beef Cows²				
1-49	606,200	601,000	28.7	28.5
50-99	85,850	83,000	17.2	17.1
100-499	68,450	67,200	38.0	38.0
500-999	4,420	4,340	8.7	8.7
1,000-1,999	1,100	1,125	4.3	4.5
2,000-4,999	280	280	2.1	2.1
5,000+	50	55	1.0	1.1
Total	766,350	757,000	100.0	100.0

¹ Revised.

² Included in operations with cattle.

Number of All Cattle and Beef Cow Operations United States, 1988-2008

Operations (000)



Milk Cows: Number of Operations, Percent of Inventory and Percent of Milk Production by Size Group, United States, 2007-2008

Head	Operations ¹		Percent of Inventory		Percent of Production ²	
	2007 ³	2008	2007 ³	2008	2007 ³	2008
	<i>Number</i>	<i>Number</i>	<i>Percent</i>	<i>Percent</i>	<i>Percent</i>	<i>Percent</i>
1-29	21,705	21,300	2.0	1.8	1.3	1.2
30-49	12,270	11,900	5.2	5.1	4.0	3.9
50-99	19,330	17,800	14.0	13.1	12.0	11.5
100-199	9,011	8,700	13.0	12.5	12.0	11.8
200-499	4,359	3,950	13.9	12.6	13.7	13.1
500-999	1,720	1,720	12.5	12.5	12.3	12.5
1,000-1,999	920	900	13.3	13.1	16.1	15.5
2,000+	680	730	26.1	29.3	28.6	30.5
Total	69,995	67,000	100.0	100.0	100.0	100.0

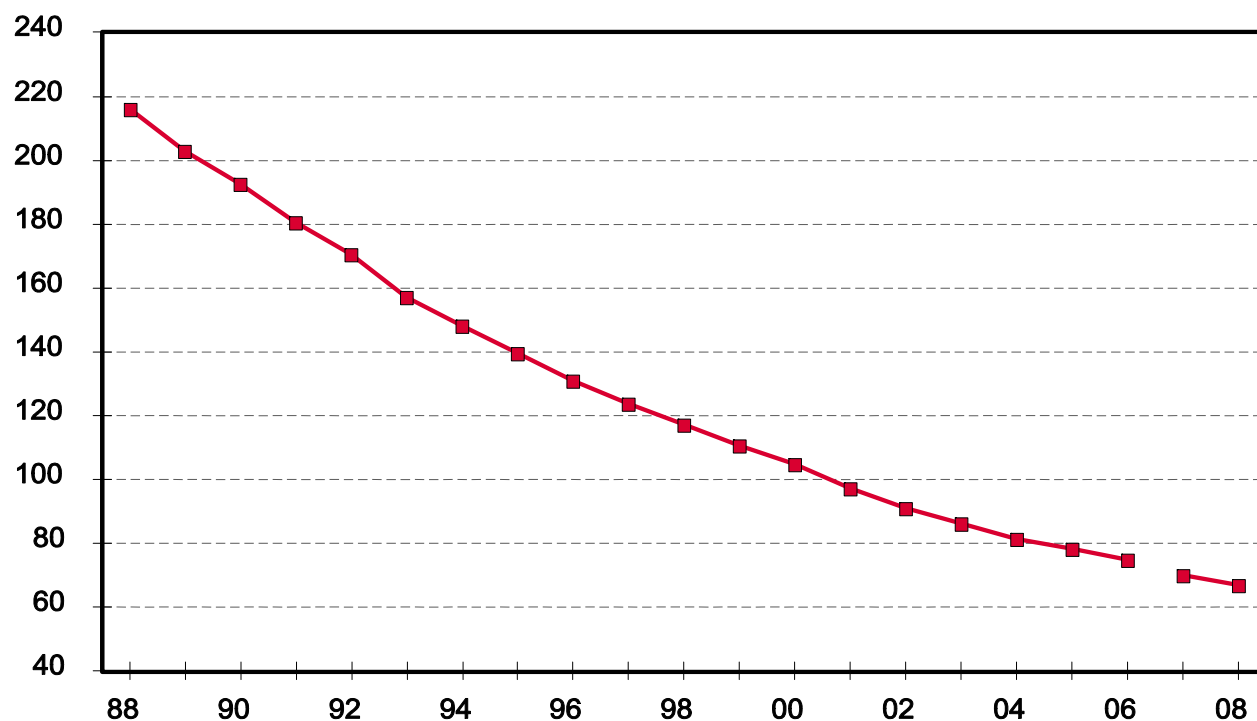
¹ Included in operations with cattle.

² Estimates reflect the average distributions of various probability surveys conducted during the year.

³ Revised.

Milk Cow Operations United States, 1988-2008

Operations (000)



**Hogs and Pigs: Number of Operations and Percent of Inventory
by Size Group, United States, 2007-2008**

Head	Operations		Percent of Inventory	
	2007 ¹	2008	2007 ¹	2008
	<i>Number</i>	<i>Number</i>	<i>Percent</i>	<i>Percent</i>
1-99	52,445	50,680	0.9	0.9
100-499	7,079	6,740	2.7	2.5
500-999	3,620	3,490	3.7	3.5
1,000-1,999	4,048	3,950	8.2	8.0
2,000-4,999	5,397	5,370	24.4	24.0
5,000+	2,861	2,920	60.1	61.1
Total	75,450	73,150	100.0	100.0

¹ Revised.

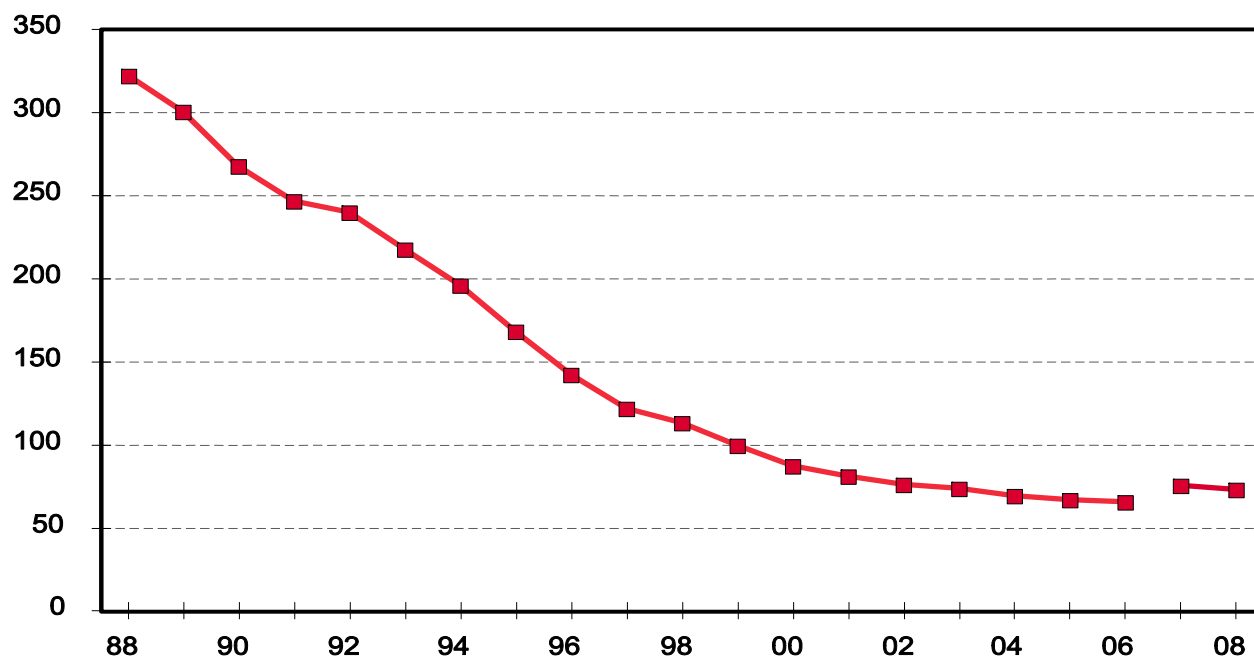
**Hogs and Pigs: Number of Operations and Percent of Inventory by Size Group,
Based on Ownership, United States, 2007-2008**

Head	Operations		Percent of Inventory	
	2007 ¹	2008	2007 ¹	2008
	<i>Number</i>	<i>Number</i>	<i>Percent</i>	<i>Percent</i>
1-99	52,370	50,610	1.0	1.0
100-499	6,140	5,870	2.6	2.4
500-999	2,470	2,380	2.6	2.4
1,000-1,999	2,210	2,160	4.6	4.5
2,000-4,999	2,380	2,350	10.8	10.7
5,000-9,999	735	705	7.7	7.4
10,000-19,999	370	365	7.5	7.4
20,000-49,999	185	185	8.5	8.5
50,000+	130	135	54.7	55.7
Total	66,990	64,760	100.0	100.0

¹ Revised.

Number of Hog Operations United States, 1988-2008

Operations (000)



**Sheep and Goat Operations: Number of Operations with Sheep or Goats,
United States, 2007-2008**

Commodity	2007 ¹	2008
	<i>Number</i>	<i>Number</i>
Sheep	83,130	82,330
Angora Goats	7,190	6,500
Milk Goats	27,400	29,000
Meat and Other Goats	123,200	128,800
All Goats	144,510	149,800

¹ Revised.

Breeding Sheep: Survey Percent by Size Group, United States, 2007-2008 ¹

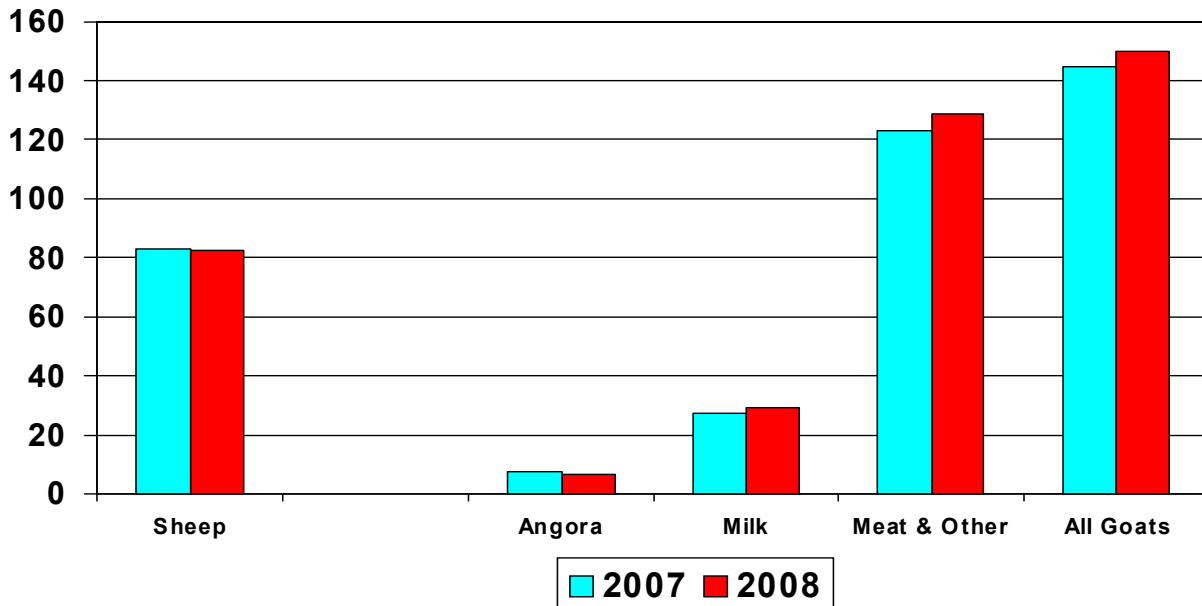
Item	1-99 Head		100-499 Head		500-4,999 Head		5,000+ Head	
	2007 ²	2008	2007 ²	2008	2007 ²	2008	2007 ²	2008
Operations	92.5	92.5	6.1	6.2	1.3	1.2	0.1	0.1
Inventory	32.9	32.6	21.4	22.7	31.9	30.2	13.8	14.5

¹ Percents reflect distributions from annual survey.

² Revised.

Sheep and Goat Operations United States, 2007-2008

**Operations
(000)**



**Number of Operations by State,
United States, and Puerto Rico, 2007 ¹**

State	Cattle and Calves	Beef Cows ²	Milk Cows ²
	<i>Number</i>	<i>Number</i>	<i>Number</i>
AL	24,000	22,000	160
AK	130	100	30
AZ	7,700	5,300	180
AR	28,000	25,000	340
CA	16,600	11,800	2,200
CO	14,700	11,600	450
CT	1,200	750	270
DE	400	250	80
FL	21,000	16,700	420
GA	21,000	17,700	640
HI	1,100	850	15
ID	10,600	7,400	810
IL	18,500	14,800	1,200
IN	18,500	12,700	2,000
IA	30,000	21,000	2,400
KS	30,000	26,000	780
KY	44,000	38,000	2,300
LA	14,100	12,400	300
ME	2,100	1,300	480
MD	3,700	2,500	660
MA	1,800	1,200	310
MI	14,500	7,800	2,700
MN	25,000	14,400	5,100
MS	17,800	16,000	180
MO	59,000	52,000	2,600
MT	12,300	11,100	390
NE	22,000	18,300	490
NV	1,500	1,300	60
NH	1,000	640	220
NJ	1,400	930	150
NM	9,500	8,200	270
NY	13,600	6,800	5,700
NC	19,200	15,000	460
ND	10,500	9,700	400
OH	26,000	17,400	3,700
OK	55,000	47,000	980
OR	16,100	12,900	600
PA	26,000	12,300	8,300
RI	280	230	40
SC	8,800	8,200	110
SD	15,700	13,800	660
TN	47,000	42,000	1,200
TX	152,000	132,000	1,300
UT	7,600	5,600	450
VT	2,500	1,000	1,200
VA	26,000	22,000	1,200
WA	12,700	10,100	820
WV	12,800	10,700	370
WI	35,000	14,800	14,200
WY	5,600	4,800	120
US	965,510	766,350	69,995
PR	4,500	2,400	2,000

¹ Revised.

² Included in operations with cattle.

**Cattle and Calves: Number of Operations by Size Group,
Selected States and United States, 2007¹**

State	1-49 Head	50-99 Head	100-499 Head	500-999 Head	1000+ Head
	<i>Number</i>	<i>Number</i>	<i>Number</i>	<i>Number</i>	<i>Number</i>
AL	18,200	3,100	2,400	230	70
AZ	6,700	350	440	90	120
AR	19,200	4,700	3,700	270	130
CA	11,400	1,200	2,000	800	1,200
CO	9,700	1,700	2,400	560	340
FL	16,600	1,900	1,900	320	280
GA	15,600	2,800	2,300	220	80
ID	7,200	1,000	1,600	380	420
IL	12,500	2,900	2,800	250	50
IN	14,500	2,100	1,730	110	60
IA	15,200	5,800	7,300	1,200	500
KS	15,600	5,400	7,200	1,000	800
KY	31,000	7,300	5,300	340	60
LA	9,900	2,100	1,900	160	40
MD	2,700	450	520	20	10
MI	11,000	1,400	1,750	230	120
MN	14,100	4,300	5,900	520	180
MS	12,900	2,700	2,000	150	50
MO	36,000	11,500	10,600	670	230
MT	5,300	1,800	3,900	900	400
NE	8,500	4,100	6,800	1,500	1,100
NM	6,900	880	1,200	235	285
NY	7,900	2,300	2,900	320	180
NC	15,300	2,230	1,500	130	40
ND	3,400	2,000	4,400	540	160
OH	20,000	3,000	2,660	280	60
OK	35,000	8,400	9,700	1,400	500
OR	12,800	1,200	1,500	340	260
PA	16,700	4,600	4,400	240	60
SD	4,400	2,600	6,800	1,400	500
TN	35,000	6,900	4,900	150	50
TX	113,000	17,900	17,700	2,000	1,400
UT	4,800	1,000	1,400	290	110
VT	1,400	400	600	65	35
VA	18,400	3,700	3,500	320	80
WA	10,500	800	1,000	220	180
WI	18,300	6,700	9,100	650	250
WY	2,600	730	1,600	430	240
Oth Sts ²	25,900	3,620	2,550	260	180
US	646,100	137,560	151,850	19,190	10,810

¹ Revised.

² Individual State estimates not available for the 12 Other States.

**Cattle and Calves: Percent of Inventory by Size Group,
Selected States and United States, 2007¹**

State	1-49 Head	50-99 Head	100-499 Head	500-999 Head	1,000+ Head
	<i>Percent</i>	<i>Percent</i>	<i>Percent</i>	<i>Percent</i>	<i>Percent</i>
AL	26.0	18.0	37.0	10.0	9.0
AZ	6.4	2.3	8.3	6.0	77.0
AR	20.0	18.0	38.0	10.0	14.0
CA	2.6	1.5	8.5	9.4	78.0
CO	5.0	4.0	19.0	13.0	59.0
FL	14.0	7.4	22.0	13.6	43.0
GA	23.0	16.0	37.0	12.0	12.0
ID	4.0	3.0	15.0	12.0	66.0
IL	19.0	16.0	43.0	14.0	8.0
IN	25.0	16.0	36.0	8.0	15.0
IA	8.0	10.0	36.0	22.0	24.0
KS	4.8	5.7	22.0	10.5	57.0
KY	24.0	20.0	41.0	10.0	5.0
LA	21.0	16.0	42.0	13.0	8.0
MD	21.0	16.0	49.0	7.0	7.0
MI	14.0	9.0	36.0	15.0	26.0
MN	11.0	12.0	47.0	17.0	13.0
MS	25.0	19.0	38.0	7.0	11.0
MO	17.0	18.0	46.0	10.0	9.0
MT	3.7	5.3	36.0	23.0	32.0
NE	2.7	4.3	23.0	16.0	54.0
NM	6.0	4.0	17.0	11.0	62.0
NY	9.0	11.0	39.0	16.0	25.0
NC	31.0	18.0	34.0	10.0	7.0
ND	4.0	8.0	53.0	20.0	15.0
OH	24.0	15.0	38.0	15.0	8.0
OK	12.0	11.0	37.0	17.0	23.0
OR	11.0	6.0	23.0	16.0	44.0
PA	15.0	21.0	49.0	8.8	6.2
SD	2.5	5.0	43.0	25.5	24.0
TN	32.0	21.0	39.0	4.8	3.2
TX	13.5	9.0	26.0	9.5	42.0
UT	8.0	8.0	35.0	22.0	27.0
VT	7.0	11.0	41.0	17.0	24.0
VA	21.0	16.0	43.0	13.0	7.0
WA	11.0	5.0	21.0	14.0	49.0
WI	9.5	14.0	50.0	13.0	13.5
WY	3.0	4.0	29.0	23.0	41.0
Oth Sts ²	22.0	14.0	27.0	10.0	27.0
US	11.5	9.8	31.4	13.4	33.9

¹ Revised.

² Individual State estimates not available for the 12 Other States.

**Beef Cows: Number of Operations by Size Group, Selected
States and United States, 2007^{1 2}**

State	1-49 Head	50-99 Head	100-499 Head	500+ Head
	<i>Number</i>	<i>Number</i>	<i>Number</i>	<i>Number</i>
AL	18,200	2,300	1,450	50
AZ	4,600	280	350	70
AR	19,600	3,400	1,920	80
CA	9,400	940	1,200	260
CO	8,400	1,300	1,700	200
FL	13,900	1,300	1,200	300
GA	14,900	1,750	1,000	50
ID	5,500	770	960	170
IL	12,400	1,640	750	10
IN	11,700	740	260	
IA	15,300	3,550	2,100	50
KS	17,200	4,600	3,950	250
KY	31,800	4,200	1,950	50
LA	9,800	1,500	1,050	50
MN	12,300	1,400	680	20
MS	13,200	1,850	900	50
MO	39,000	8,100	4,750	150
MT	5,100	1,750	3,700	550
NE	9,300	3,500	5,000	500
NM	6,300	800	900	200
NC	13,200	1,250	530	20
ND	4,000	2,360	3,200	140
OH	16,400	700	290	10
OK	36,000	6,100	4,600	300
OR	10,800	890	980	230
PA	11,800	400	100	
SD	5,300	3,000	5,100	400
TN	36,000	4,300	1,670	30
TX	107,000	13,600	10,500	900
UT	3,800	830	870	100
VA	18,300	2,300	1,350	50
WA	9,000	500	530	70
WY	2,300	670	1,500	330
Oth Sts ³	54,400	3,280	1,460	210
US	606,200	85,850	68,450	5,850

¹ Revised.

² Included in operations with cattle. Missing data combined with other size groups to avoid disclosing individual operations.

³ Individual State estimates not available for the 17 Other States.

**Beef Cows: Percent of Inventory by Size Group, Selected
States and United States, 2007^{1 2}**

State	1-49 Head	50-99 Head	100-499 Head	500+ Head
	<i>Percent</i>	<i>Percent</i>	<i>Percent</i>	<i>Percent</i>
AL	40.0	21.0	34.0	5.0
AZ	21.0	9.0	31.0	39.0
AR	37.0	24.0	33.0	6.0
CA	16.0	9.0	38.0	37.0
CO	17.0	12.0	47.0	24.0
FL	18.0	9.0	27.0	46.0
GA	40.0	21.0	32.0	7.0
ID	14.0	11.0	42.0	33.0
IL	48.0	25.0	25.5	1.5
IN	64.0	19.0	17.0	
IA	34.0	25.5	36.0	4.5
KS	22.0	20.0	45.0	13.0
KY	47.0	24.0	26.0	3.0
LA	32.0	19.0	39.0	10.0
MN	49.0	22.0	25.5	3.5
MS	44.0	23.0	28.0	5.0
MO	35.0	25.0	35.0	5.0
MT	6.0	8.0	53.0	33.0
NE	11.0	13.0	53.0	23.0
NM	16.0	10.0	35.0	39.0
NC	52.0	21.0	23.0	4.0
ND	10.0	18.0	62.0	10.0
OH	67.0	15.0	15.5	2.5
OK	30.0	20.0	38.0	12.0
OR	18.0	10.0	35.0	37.0
PA	75.0	15.0	10.0	
SD	7.0	12.5	62.0	18.5
TN	52.0	24.0	22.0	2.0
TX	31.0	17.0	36.0	16.0
UT	14.0	15.0	47.0	24.0
VA	41.0	22.0	32.0	5.0
WA	32.0	12.0	37.0	19.0
WY	5.0	6.0	47.0	42.0
Oth Sts ³	47.0	14.0	22.0	17.0
US	28.7	17.2	38.0	16.1

¹ Revised.

² Missing data combined with other size groups to avoid disclosing individual operations.

³ Individual State estimates not available for the 17 Other States.

**Milk Cows: Number of Operations by Size Group, Selected
States and United States, 2007^{1 2}**

State	1-29 Head	30-49 Head	50-99 Head	100-199 Head	200-499 Head	500+ Head
	<i>Number</i>	<i>Number</i>	<i>Number</i>	<i>Number</i>	<i>Number</i>	<i>Number</i>
AZ	100			5	5	70
CA	490		50	110	450	1,100
CO	300	20	15	20	35	60
FL	290		10	10	35	75
GA	370	20	35	120	65	30
ID	230	50	100	90	110	230
IL	370	160	360	215	80	15
IN	970	330	390	200	75	35
IA	720	450	710	350	120	50
KS	380	100	160	85	30	25
KY	1,300	360	370	220	43	7
MD	150	110	210	130	50	10
MI	970	370	500	480	265	115
MN	900	1,100	1,950	780	280	90
MO	1,550	300	460	240	40	10
NM	120			4	6	140
NY	1,250	1,100	1,900	870	370	210
NC	205	20	80	92	50	13
OH	1,200	880	990	430	150	50
OK	650	50	130	110	30	10
OR	330	20	40	80	80	50
PA	1,700	2,300	3,000	980	250	70
SD	220	110	160	90	45	35
TN	700	90	190	160	50	10
TX	720	20	70	150	140	200
UT	190	20	50	90	60	40
VT	230	200	400	200	120	50
VA	440	100	250	300	95	15
WA	360	20	70	100	130	140
WI	2,100	3,500	5,800	1,700	820	280
Oth Sts ³	2,200	470	880	600	280	85
US	21,705	12,270	19,330	9,011	4,359	3,320

¹ Revised.

² Included in operations with cattle. Missing data combined with other size groups to avoid disclosing individual operations.

³ Individual State estimates not available for the 20 Other States.

**Milk Cows: Percent of Inventory by Size Group, Selected
States and United States, 2007^{1 2}**

State	1-29 Head	30-49 Head	50-99 Head	100-199 Head	200-499 Head	500+ Head
	<i>Percent</i>	<i>Percent</i>	<i>Percent</i>	<i>Percent</i>	<i>Percent</i>	<i>Percent</i>
AZ	0.1			0.3	1.3	98.3
CA	0.1		0.2	0.8	7.9	91.0
CO	1.0	0.6	0.8	2.3	9.8	85.5
FL	0.6		0.7	1.1	9.6	88.0
GA	2.5	1.2	3.3	22.0	25.0	46.0
ID	0.2	0.3	1.3	2.3	6.4	89.5
IL	3.5	6.5	25.0	28.0	24.0	13.0
IN	5.3	7.7	16.0	16.0	12.0	43.0
IA	4.0	8.0	22.0	21.0	15.0	30.0
KS	2.1	3.3	9.9	9.6	7.1	68.0
KY	9.0	15.0	27.0	31.0	12.0	6.0
MD	2.3	7.7	25.0	31.0	21.0	13.0
MI	2.5	4.0	9.5	19.0	22.0	43.0
MN	3.0	9.0	29.0	22.0	17.0	20.0
MO	10.0	10.0	29.0	27.0	10.0	14.0
NM	0.1			0.2	0.7	99.0
NY	2.0	7.0	20.0	19.0	18.0	34.0
NC	2.0	2.0	13.0	26.0	28.0	29.0
OH	5.0	12.0	27.0	20.0	16.0	20.0
OK	5.0	3.0	13.0	22.0	13.0	44.0
OR	0.8	0.7	2.5	11.0	22.0	63.0
PA	3.0	16.0	35.0	23.0	13.0	10.0
SD	2.2	4.8	13.0	12.0	16.0	52.0
TN	5.3	5.7	22.0	36.0	22.0	9.0
TX	0.5	0.2	1.1	5.2	11.0	82.0
UT	0.8	0.7	4.5	15.0	21.0	58.0
VT	2.0	6.0	19.0	19.0	22.0	32.0
VA	2.5	3.5	18.0	39.0	26.0	11.0
WA	0.6	0.3	2.1	6.0	16.0	75.0
WI	3.0	11.0	29.0	18.0	19.0	20.0
Oth Sts ³	3.0	5.0	18.0	23.0	24.0	27.0
US	2.0	5.2	14.0	13.0	13.9	51.9

¹ Revised.

² Missing data combined with other size groups to avoid disclosing individual operations.

³ Individual State estimates not available for the 20 Other States.

**Milk Production: Percent of Production by Size Group, Selected
States, and United States, 2007^{1 2}**

State	1-29 Head	30-49 Head	50-99 Head	100-199 Head	200-499 Head	500+ Head
	<i>Percent</i>	<i>Percent</i>	<i>Percent</i>	<i>Percent</i>	<i>Percent</i>	<i>Percent</i>
AZ				0.2	1.3	98.5
CA	0.1		0.2	0.5	7.2	92.0
CO	0.6	0.5	0.6	1.9	9.4	87.0
FL	0.4		0.6	0.8	8.2	90.0
GA	1.7	1.1	3.2	20.0	24.0	50.0
ID	0.1	0.2	0.9	1.7	5.6	91.5
IL	2.6	5.9	23.0	28.0	24.5	16.0
IN	3.7	6.3	14.0	15.0	12.0	49.0
IA	3.1	6.4	19.0	20.5	16.0	35.0
KS	1.3	2.5	8.2	9.0	7.0	72.0
KY	7.0	13.0	25.0	32.0	13.0	10.0
MD	1.5	6.5	23.0	31.0	22.0	16.0
MI	1.5	3.0	8.0	17.5	22.0	48.0
MN	2.3	7.7	28.0	23.0	18.0	21.0
MO	7.0	9.0	27.0	28.0	12.0	17.0
NM	0.1			0.2	0.7	99.0
NY	1.5	5.5	16.0	18.0	19.0	40.0
NC	1.0	1.0	11.0	23.0	27.0	37.0
OH	3.0	9.0	25.0	20.0	18.0	25.0
OK	3.0	2.0	10.0	19.0	12.0	54.0
OR	0.5	0.5	2.0	10.0	22.0	65.0
PA	2.0	14.0	35.0	23.0	14.0	12.0
SD	1.5	3.5	11.0	11.0	16.0	57.0
TN	3.5	4.5	22.0	37.0	23.0	10.0
TX	0.2	0.1	0.7	4.5	10.5	84.0
UT	0.4	0.4	3.2	13.0	21.0	62.0
VT	1.4	4.6	16.0	18.0	23.0	37.0
VA	2.0	3.0	16.0	39.0	27.0	13.0
WA	0.4	0.2	1.6	4.8	16.0	77.0
WI	2.0	9.0	27.0	18.0	20.0	24.0
Oth Sts ³	1.4	3.6	16.0	22.0	25.0	32.0
US	1.3	4.0	12.0	12.0	13.7	57.0

¹ Revised.

² Missing data combined with other size groups to avoid disclosing individual operations.

³ Individual State estimates not available for the 20 Other States.

**Livestock Operations: Number of Operations with Hogs, Sheep, Goats
by State, United States, and Puerto Rico, 2007¹**

State	Hogs	Sheep	Angora Goats	Milk Goats	Meat & Other Goats	All Goats
	<i>Number</i>	<i>Number</i>	<i>Number</i>	<i>Number</i>	<i>Number</i>	<i>Number</i>
AL	750		60	450	3,800	4,100
AK	40					
AZ	380	5,000	1,500	270	1,700	3,400
AR	1,100			480	2,600	2,800
CA	1,400	4,100	260	1,400	4,000	5,000
CO	1,200	1,600	180	780	2,200	2,700
CT	240					
DE	80					
FL	1,900		50	780	3,600	4,100
GA	1,100		110	450	4,000	4,300
HI	230				280	330
ID	660	1,200	60	380	1,100	1,300
IL	2,900	1,900	50	620	2,000	2,500
IN	3,400	2,000	60	1,000	2,700	3,400
IA	8,300	3,500	80	650	1,800	2,300
KS	1,500	1,200	50	480	1,700	2,000
KY	1,500	1,400	130	750	4,800	5,300
LA	720			170	1,500	1,600
ME	440					
MD	410	800	60	280	980	1,200
MA	450					
MI	2,700	2,300	150	1,100	2,400	3,000
MN	4,400	2,500	100	620	1,600	2,000
MS	680		40	250	1,600	1,800
MO	3,000	2,200	100	950	3,800	4,500
MT	490	1,500	90	240	510	730
NE	2,200	1,300	50	260	930	1,100
NV	90	250			270	320
N. ENG ²		3,000	270	1,200	1,900	2,900
NH	270					
NJ	270		80	230	870	1,100
NM	400	2,900	740	250	1,500	2,300
NY	1,900	1,800	150	1,100	2,000	2,700
NC	2,800	1,300	180	790	5,100	5,600
ND	350	680			210	280
OH	3,700	3,400	160	1,200	4,100	4,900
OK	2,700	1,900	100	850	5,200	5,700
OR	1,300	3,200	250	900	2,500	3,200
PA	3,600	3,800	230	1,300	3,800	4,800
RI	100					
SC	810		80	320	2,800	3,000
SD	960	1,700	20	180	450	590
TN	1,500	1,300	60	590	6,500	6,800
TX	4,500	8,700	780	2,100	24,800	26,400
UT	610	1,600	130	230	840	1,100
VT	250					
VA	1,200	2,100	160	620	3,400	4,000
WA	1,500	2,400	200	1,100	2,500	3,200
WV	1,000	1,300		440	1,900	2,100
WI	3,200	2,800	180	1,100	2,300	3,200
WY	270	900	40	240	490	640
Oth Sts ³		5,600	200	300	170	220
US	75,450	83,130	7,190	27,400	123,200	144,510
PR	1,500	600				

¹ Revised.

² N ENG includes CT, ME, MA, NH, RI and VT.

³ Individual State estimates not available for States not shown, but are included in Other States.

**Hogs and Pigs: Number of Operations by Size Group, Selected
States and United States, 2007¹**

State	1-99 Head	100-499 Head	500-999 Head	1,000-1,999 Head	2,000-4,999 Head	5,000+ Head
	<i>Number</i>	<i>Number</i>	<i>Number</i>	<i>Number</i>	<i>Number</i>	<i>Number</i>
AR	960	14	40	45	35	6
CO	1,130	35	5	3	12	15
IL	1,200	540	280	300	370	210
IN	1,800	530	320	260	320	170
IA	1,300	1,800	1,200	1,300	1,900	800
KS	1,000	230	80	60	70	60
MI	2,150	240	100	70	100	40
MN	1,500	680	460	530	880	350
MO	2,000	450	150	130	180	90
NE	690	630	320	260	200	100
NC	1,100	80	40	440	530	610
OH	2,700	340	140	180	270	70
OK	2,550	40	15	30	25	40
PA	2,900	230	110	160	160	40
SD	380	220	100	70	100	90
TX	4,390	80	10	5	5	10
WI	2,700	290	90	70	40	10
Oth Sts ²	21,995	650	160	135	200	150
US	52,445	7,079	3,620	4,048	5,397	2,861

¹ Revised.

² Individual State estimates not available for the 33 Other States.

**Hogs and Pigs: Percent of Inventory by Size Group, Selected
States and United States, 2007¹**

State	1-99 Head	100-499 Head	500-999 Head	1,000-1,999 Head	2,000-4,999 Head	5,000+ Head
	<i>Percent</i>	<i>Percent</i>	<i>Percent</i>	<i>Percent</i>	<i>Percent</i>	<i>Percent</i>
AR	3.1	1.3	11.0	21.6	35.9	27.1
CO	1.3	0.7	0.5	0.4	4.1	93.0
IL	0.6	3.3	4.4	9.7	27.0	55.0
IN	0.9	3.9	5.7	9.5	28.0	52.0
IA	0.2	2.7	4.2	8.9	30.0	54.0
KS	1.0	2.7	2.7	3.9	9.7	80.0
MI	2.7	5.5	7.2	8.6	30.0	46.0
MN	0.4	2.4	4.2	9.5	34.0	49.5
MO	1.1	3.4	3.4	5.6	17.0	69.5
NE	0.5	5.2	6.8	11.0	19.0	57.5
NC	0.1	0.2	0.3	6.9	17.5	75.0
OH	1.9	4.7	5.4	14.0	41.0	33.0
OK	0.9	0.4	0.5	1.7	3.5	93.0
PA	2.7	5.0	6.8	19.0	42.0	24.5
SD	0.6	3.6	4.8	6.0	20.0	65.0
TX	2.6	1.5	0.6	0.6	1.2	93.5
WI	9.0	15.0	14.0	20.0	26.0	16.0
Oth Sts ²	5.2	3.6	2.9	4.5	17.0	66.8
US	0.9	2.7	3.7	8.2	24.4	60.1

¹ Revised.

² Individual State estimates not available for the 33 Other States.

Reliability of Farm Numbers and Land in Farms Data in this Report

Survey Procedures: Data are collected by the National Agricultural Statistics Service (NASS) during the June Agricultural Survey using sampling procedures to ensure every farm and ranch has a chance of being selected. NASS uses a multiple sampling frame approach to count farms and measure land in farms. An Area Sampling Frame that divides all land into segments is built for every State. A sample of segments is selected in each State and enumerated in early June. Highly trained interviewers locate each sampled segment and identify every farm and ranch operating land in the segment and the number of acres in each operation.

These data are used to compute summary indications of farm numbers and acres of land in farms. Additionally, all farms found in the segments are checked against a list of farms and ranches maintained by NASS to determine if the farm is on the list. Operations found in the Area Frame sample that are not on the list provide a measure of incompleteness of the list. The summarized totals for these non-overlap (or not-on-list) operations are combined with summarized totals collected from a sample selected from the list to calculate additional indications of farms and land in farms.

Estimation Procedures: Data are checked for reasonableness and consistency and summarized for each state. State estimates are aggregated to regional and national totals for Headquarters review. Field Offices perform a thorough review of their survey results and historical data relationships and recommend official estimates. Headquarters establishes regional and national estimates and ensures that state estimates are in balance with the Regional and National numbers.

Revision Policy: Estimates are subject to revision the following year and following review of the five-year Census of Agriculture. The basis for revision must be supported by additional data which directly affects the level of the estimate. Historical publication statistical bulletin, NASS-SB1018 (04), with revisions for 2003-2007 will be published February 27, 2009.

Reliability: Two types of errors, sampling and nonsampling, are possible in an estimate based on a sample survey. Both types can affect the quality of the estimates.

Sampling error occurs because a complete census is not taken. The sampling error measures the variation in estimates from the average of all possible samples. An estimate of 100 with a sampling error of 1 would mean that chances are 19 out of 20 that the estimates from all possible samples averaged together would be between 98 and 102; which is the survey estimate, plus or minus two times the sampling error. The sampling error expressed as a percent of the estimate is called the relative sampling error. The relative sampling error for the U.S. number of farms and land in farms is 1.3 and 1.8 percent respectively. The sampling error for total number of farms and total land in farms is less than the sampling error for each component of the total, such as number of farms by economic sales class. Relative sampling errors by economic sales class generally ranged from 1.9 to 2.4 percent for number of farms and 2.9 to 7.4 percent for land in farms at the U.S. level.

Nonsampling errors can occur in complete censuses as well as sample surveys. They are caused by the inability to obtain correct information from each person surveyed, differences in interpreting questions or definitions, and mistakes in coding or processing the data. Special efforts are taken at each step of the survey to minimize nonsampling errors.

Terms and Definitions

A **farm** is “any place from which \$1,000 or more of agricultural products were produced and sold, or normally would have been sold, during the year”. Government payments are included in sales. Ranches, institutional farms, experimental and research farms, and Indian Reservations are included as farms. Places with the entire acreage enrolled in the Conservation Reserve Program (CRP), Wetlands Reserve Program (WRP), or other government programs are counted as farms.

The definition of a farm was first established in 1850 and has changed nine times since. The current definition was first used for the 1974 Census.

Land in farms consists of agricultural land used for crops, pasture, or grazing. Also included is woodland and wasteland not actually under cultivation or used for pasture or grazing, provided it was part of the farm operator’s total operation. Land in farms includes acres in the Conservation Reserve, Wetlands Reserve Programs, or other government programs.

Land in farms includes land owned and operated as well as land rented from others. Land used rent-free is included as land rented from others. All grazing land, except land used under government permits on a per-head basis, is included as land in farms provided it was part of a farm or ranch. Land under the exclusive use of a grazing association is reported by the grazing association and included as land in farms. All land in American Indian reservations used for growing crops or grazing livestock is included as land in farms. Land in reservations not reported by individual American Indians or non-Native Americans is reported in the name of the cooperative group that used the land. In many instances, the entire American Indian reservation is reported as one farm.

Economic sales classes are based on the gross value of agricultural products sold. Government program payments are also included.

Point Farms are places that did not have \$1,000 of reported sales for the year, but had sufficient crops and livestock to normally have sales of \$1,000 or more.

A **cattle operation** is any place having one or more head of cattle on hand on December 31.

A **beef cow operation** is any place having one or more head of beef cows on hand on December 31.

A **milk cow operation** is any place having one or more head of milk cows on hand on December 31.

A **hogs and pigs operation** is any place having one or more hog or pig on hand on December 31.

A **sheep and lamb operation** is any place having one or more head of sheep or lambs on hand on December 31.

A **goat and kid operation** is any place having one or more head of goats or kids on hand on December 31.

Farm Definition History: The definition of a farm has remained the same since 1974. Activities included as agriculture, however, have undergone modification in recent years. Beginning in 1995, operations having 5 or more horses or ponies and no other agricultural sales were counted as horse farms. An operation with 1 or more horses with agricultural sales of at least \$1,000, qualified as a farm. Two industries, maple syrup and short rotation woody crop farms, were added beginning in 1997 as a result of the new North American Industry Classification System (NAICS). These changes were made to achieve comparability with the Census of Agriculture farm definition. All the changes in the farm definition beginning in 1995 were carried back to 1993 and included in the 1993-1998 estimates. These changes bring comparability between the Census of Agriculture data and the annually published NASS estimates. Because of these changes in the farm definition, the official estimates show a level difference in the number of farms between 1992 and 1993 in some states. To further align the counting of farms with the Census of Agriculture, places with 100 acres or more of pasture only in 2002 were included in farm and land in farm numbers. The handling of Indian reservation land was changed in 2002 to provide some accounting for individual farms.

**Minimum Criteria for “FARM” Definition, 1840 - Present
and Enumeration of Apiaries and Fur Farms**

Year	Acres in Place	Value of Agricultural Products (Produced)	Value of Sales of Agricultural Products	Required some Agricultural Operations	Apiaries and Fur Farms Enumerated
1974 - Present	--	--	\$1,000 or more	--	--
1959	Less than 10 10 or more	-- --	\$250 or more \$50 or more	-- --	-- --
1954	Less than 3 3 or more	-- \$150 or more	\$150 or more --	-- --	-- --
1950	Less than 3 3 or more	-- \$150 or more	\$150 or more --	-- --	Apiaries Fur Farms
1935 - 1945	Less than 3 3 or more	\$250 or more --	-- --	-- X	Apiaries Fur Farms
1930	Less than 3 3 or more	\$250 or more --	-- --	-- X	Apiaries --
1925	Less than 3 3 or more	\$250 or more --	-- --	-- X	-- --
1910 - 1925	Less than 3 3 or more	\$250 or more --	-- --	-- X	Apiaries --
1900	Less than 3 3 or more	-- --	-- --	-- X	Apiaries --
1870 - 1890	Less than 3 3 or more	-- --	\$500 or more --	-- X	Apiaries --
1860	--	--	--	--	--
1850	--	\$100 or more	--	--	Apiaries
1840	--	--	--	--	--

Historic Estimates: Final estimates of Farms and Land in Farms in earlier years are available in Statistical Bulletins, No. 991 for 1998-2002, No. 955 for 1993-97, No. 895 for 1988-92, No. 792 for 1979-87, SpSy3 for 1975-80, No. 594 for 1969-75, No. 507 for 1959-70, No. 316 for number of farm estimates for 1910-59 and land in farms estimates for 1950-59.

Agricultural Census Publications: The U. S. Department of Agriculture's National Agricultural Statistics Service (NASS) released several products from the 2007 Census of Agriculture on February 4, 2009. The Census is the leading source of statistics about the Nation's agricultural production and the only source of consistent, comparable data at the county, State, and national levels. The Census includes all places from which \$1,000 or more of agricultural products, including government payments, were produced and sold, or normally would have been sold, during the census year. Census publications also include demographic items such as sex of operator, residence on or off the farm, days worked off farm, years present on farm, age group categories, race, and number of persons living in each household.

Special Note Regarding the 2007 Estimates

Census: The Farms, Land in Farms, and Livestock Operations publication is produced annually. The purpose of this publication is to provide annual estimates of Farms, Land in Farms, and Operations with Livestock. It also provides revisions, as necessary, to previous year estimates. The Census of Agriculture, conducted every five years provides a base from which the annual surveys measure the change from that base. At the end of the next five year cycle, the annual estimates are revised based on inter-census trends.

The 2007 Census of Agriculture showed a significant increase in the number of farms, and reversed the downward trend that was shown in the annual estimates of Farm Numbers since the 2002 Census of Agriculture. NASS believes that some of the increase is due to methodological changes that allowed NASS to more accurately count small farms in the 2007 Census. This is discussed in more detail below.

Methodological Discussion: Each year NASS conducts the June Area Frame Survey (AFS) to provide an estimate of the number of farms and the land in farms. The exception is Alaska, which does not have an area frame and uses a list survey instead. The area frame is stratified by land use. A sample of approximately 11,000 segments of land (each approximately one square mile in size) is selected, and field enumerators visit each sampled segment to identify agricultural activity within the segment. The AFS is assumed to provide complete coverage of the universe of farm and ranch operations because the area-based frame covers all land in the U.S.

In preparation for the census of agriculture, NASS builds the Census Mail List (CML) consisting of all known farms and potential farms. In addition, NASS uses the area frame sample to measure and account for the incompleteness of the CML in a dual-frame estimation procedure. This dual-frame estimation procedure assumes complete coverage of the universe of farm and ranch operations because the undercoverage of the CML is accounted for through the area frame sample.

Results from the 2002 Census of Agriculture indicated undercoverage of farms in the lowest value of sales categories. This category includes a high concentration of disadvantaged and minority farm operators. In preparation for the 2007 Census, NASS exerted more extensive efforts than in previous censuses to build a comprehensive list. Additionally, NASS worked with several community based organizations and producer groups to enhance awareness, to increase response, and to improve coverage of these types of farms. This resulted in a 2007 CML with 3,194,373 records as compared with 2,841,788 in 2002. Additionally, NASS augmented the area frame sample with segments that were located in areas where small and minority operated farms were likely to be located.

The 2007 Census of Agriculture produced a greater number of farms in the lowest value of sales categories. The extensive list building efforts and the augmentation of the area frame sample allowed NASS to capture more of the small farms with less than \$10,000 in value of agricultural sales. Additionally, 2007 was a year of relatively high commodity prices. As the value of farm commodities increased, more very small operations are able to meet the \$1,000 value of sales threshold to qualify as a farm in the census.

After the 2007 Census of Agriculture NASS conducted a classification error research study for the census in five states. The study used data from the 2007 AFS and the 2007 census to examine whether there were farms incorrectly classified as nonfarms, and whether there were any nonfarms incorrectly classified as farms. Records in the 2007 AFS were matched to the 2007 census using probabilistic record linkage. Records whose farm status differed in the two data collections were interviewed to determine which data source was correct.

Results of the study showed that where there were discrepancies in farm status between the two reports, the census data was more often correct than the AFS data. Some AFS farms had not been correctly classified by the enumeration and processing procedures. These results challenged the NASS assumption made for its annual estimates that all farms are captured using the AFS estimation procedures. This assumption had been made on the basis of the completeness of the frame, the high quality of the personal enumeration mode utilized for the data collection, and the extensive training of field enumerators collecting the data. However, the more extensive census procedures using dual-frame estimation produced a larger farm count than the AFS estimation. This result and the results of the research study provided evidence that the AFS procedure is underestimating the number of farms. Because the AFS estimate is the major indicator for producing annual farm number estimates, it is likely these farms were also underestimated in the non census years.

The 2008 and the revised 2007 farm number estimates reflect adjustments in the number of farms based on estimates produced by the 2007 Census of Agriculture. NASS has launched a research initiative to address the methodological issues discussed above.

Information Contacts

Questions about the data in this report should be directed to the commodity specialists listed below.

Farm Numbers and Land in Farms

Kevin Barnes, Chief, Environmental, Economics, and Demographics Branch..... (202) 720-6146

Kevin Hintzman, Head, Economics Section..... (202) 720-6146

Scott Shimmin- Farm Numbers and Land in Farms (202) 690-3231

Livestock Operations

Dan Kerestes, Chief, Livestock Branch..... (202) 720-3570

Scott Hollis, Head, Livestock Section (202) 720-3570

Nick Streff - Hogs and Pigs (202) 720-3106

Jim Collom - Dairy Products (202) 690-3236

Joe Gaynor - Dairy Products Prices (202) 690-2168

Mike Miller - Milk Production and Milk Cows..... (202) 720-3278

Sherry Bertramsen - Livestock Slaughter (515) 284-4340

Everett Olbert - Sheep & Lambs, Goats & Kids..... (202) 720-4751

Jason Hardegree - Cattle, Cattle on Feed..... (202) 720-3040

ACCESS TO REPORTS!!

For your convenience, there are several ways to obtain NASS reports, data products, and services:

INTERNET ACCESS

All NASS reports are available free of charge on the worldwide Internet. For access, connect to the Internet and go to the NASS Home Page at: **www.nass.usda.gov**.

E-MAIL SUBSCRIPTION

All NASS reports are available by subscription free of charge direct to your e-mail address. Starting with the NASS Home Page at **www.nass.usda.gov**, under the right navigation, *Receive reports by Email*, click on **National** or **State**. Follow the instructions on the screen.

PRINTED REPORTS OR DATA PRODUCTS

CALL OUR TOLL-FREE ORDER DESK: 800-999-6779 (U.S. and Canada)
Other areas, please call 703-605-6220 FAX: 703-605-6900
(Visa, MasterCard, check, or money order acceptable for payment.)

ASSISTANCE

For **assistance** with general agricultural statistics or further information about NASS or its products or services, contact the **Agricultural Statistics Hotline** at **800-727-9540**, 7:30 a.m. to 4:00 p.m. ET, or e-mail: **nass@nass.usda.gov**.

The U.S. Department of Agriculture (USDA) prohibits discrimination in all its programs and activities on the basis of race, color, national origin, age, disability, and where applicable, sex, marital status, familial status, parental status, religion, sexual orientation, genetic information, political beliefs, reprisal, or because all or a part of an individual's income is derived from any public assistance program. (Not all prohibited bases apply to all programs.) Persons with disabilities who require alternative means for communication of program information (Braille, large print, audiotape, etc.) should contact USDA's TARGET Center at (202) 720-2600 (voice and TDD).

To file a complaint of discrimination, write to USDA, Director, Office of Civil Rights, 1400 Independence Avenue, S.W., Washington, D.C. 20250-9410, or call (800) 795-3272 (voice) or (202) 720-6382 (TDD). USDA is an equal opportunity provider and employer.



Global Agriculture & Rural America in Transition

Food & Energy: Expectations & Realities

February 26-27, 2009

Crystal Gateway Marriott Hotel
Arlington, Virginia

www.usda.gov/oce/forum

Early Bird Registration \$350 until January 23, 2009 * \$375 after January 23

Topical Sessions Will Address:

- | | |
|----------------------|------------------------------|
| *Commodity Markets | *Rural America |
| *Trade & Farm Policy | *Food Safety & Food Security |
| *Conservation | *Energy |
| *Risk Management | *Biotechnology |
| *Food Prices | *World Markets |