



Cattle on Feed

Released October 16, 2009, by the National Agricultural Statistics Service (NASS), Agricultural Statistics Board, U.S. Department of Agriculture. For information on *Cattle on Feed* call Jason Hardegree at (202) 720-3040, office hours 7:30 a.m. to 4:00 p.m. ET.

U.S. Cattle on Feed Up 1 Percent

Cattle and calves on feed for slaughter market in the United States for feedlots with capacity of 1,000 or more head totaled 10.5 million head on October 1, 2009. The inventory was 1 percent above October 1, 2008. The inventory included 6.42 million steers and steer calves, down 1 percent from the previous year. This group accounted for 61 percent of the total inventory. Heifers and heifer calves accounted for 4.01 million head, up 4 percent from 2008.

Placements in feedlots during September totaled 2.39 million, 5 percent above 2008. Net placements were 2.34 million head. During September, placements of cattle and calves weighing less than 600 pounds were 490,000, 600-699 pounds were 450,000, 700-799 pounds were 593,000, and 800 pounds and greater were 855,000.

Marketings of fed cattle during September totaled 1.75 million, 4 percent below 2008. This is the third lowest fed cattle marketings for the month of September since the series began in 1996.

Other disappearance totaled 47,000 during September, 8 percent below 2008.

**Cattle on Feed: Number on Feed, Placements, Marketings, and
Other Disappearance, 1,000+ Capacity Feedlots,
United States, October 1, 2008-2009**

Item	Number		Percent of Previous Year
	2008	2009	
	<i>1,000 Head</i>	<i>1,000 Head</i>	<i>Percent</i>
On Feed Sep 1	9,997	*9,879	99
Placed on Feed During Sep	2,281	2,388	105
Fed Cattle Marketed During Sep	1,812	1,746	96
Other Disappearance During Sep	51	47	92
On Feed Oct 1	10,415	10,474	101

* Revised.

**Cattle on Feed: Number on Feed, Placements, Marketings, and
Other Disappearance, 1,000+ Capacity Feedlots,
United States, September 1, 2008-2009**

Item	Number		Percent of Previous Year
	2008	2009	
	<i>1,000 Head</i>	<i>1,000 Head</i>	<i>Percent</i>
On Feed Aug 1	9,869	9,637	98
Placed on Feed During Aug	2,061	*2,113	103
Fed Cattle Marketed During Aug	1,884	*1,815	96
Other Disappearance During Aug	49	*56	114
On Feed Sep 1	9,997	*9,879	99

* Revised.

**Cattle on Feed: Number on Feed by Class, 1,000+ Capacity Feedlots,
United States, October 1, 2008-2009**

Item	Number		Percent of Previous Year
	2008	2009	
	<i>1,000 Head</i>	<i>1,000 Head</i>	<i>Percent</i>
Class on Feed Oct 1			
Steers and Steer Calves	6,513	6,416	99
Heifers and Heifer Calves	3,848	4,012	104
Cows and Bulls	54	46	85

**Cattle on Feed: Number on Feed, 1,000+ Capacity Feedlots,
by Month, State, and United States 2008-2009**

State	Oct 1, 2008	Sep 1, 2009	Oct 1, 2009		
			Number	Percent of Previous Year	Percent of Previous Month
	<i>1,000 Head</i>	<i>1,000 Head</i>	<i>1,000 Head</i>	<i>Percent</i>	<i>Percent</i>
AZ	360	275	275	76	100
CA	505	455	465	92	102
CO	870	860	960	110	112
ID	195	195	205	105	105
IA	475	510	520	109	102
KS	2,160	2,050	2,220	103	108
NE	2,110	2,020	2,170	103	107
NM	173	(D)	(D)	(D)	(D)
OK	315	325	355	113	109
SD	175	185	195	111	105
TX	2,590	*2,530	2,600	100	103
WA	157	140	147	94	105
Oth Sts ¹	330	*334	362	(X)	108
US	10,415	*9,879	10,474	101	106

* Revised.

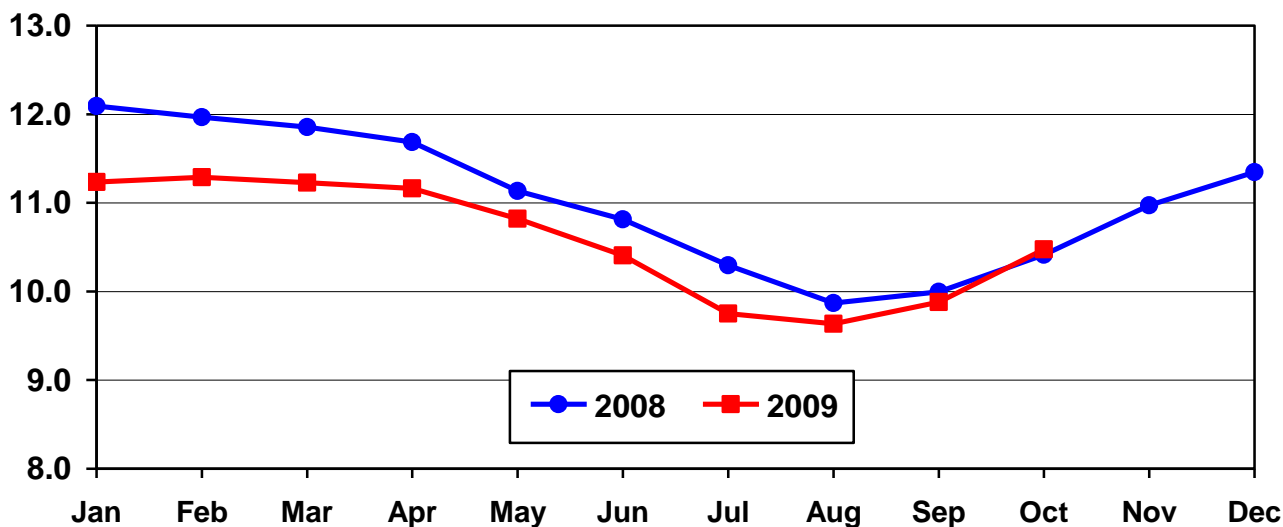
(D) Withheld to avoid disclosing data for individual operations.

(X) Comparison to 2008 is not applicable.

¹ Includes unpublished New Mexico totals for 2009.

United States Cattle on Feed 1,000+ Capacity Feedlots

Million Head



**Cattle on Feed: Number Placed on Feed, 1,000+ Capacity Feedlots,
by Month, State, and United States 2008-2009**

State	During Sep 2008	During Aug 2009	During Sep 2009		
			Number	Percent of Previous Year	Percent of Previous Month
	<i>1,000 Head</i>	<i>1,000 Head</i>	<i>1,000 Head</i>	<i>Percent</i>	<i>Percent</i>
AZ	24	28	27	113	96
CA	55	53	56	102	106
CO	255	205	260	102	127
ID	57	42	53	93	126
IA	81	74	105	130	142
KS	485	550	510	105	93
NE	550	460	550	100	120
NM	27	(D)	(D)	(D)	(D)
OK	60	73	80	133	110
SD	56	36	52	93	144
TX	510	*510	570	112	112
WA	44	31	35	80	113
Oth Sts ¹	77	*51	90	(X)	176
US	2,281	*2,113	2,388	105	113

* Revised.

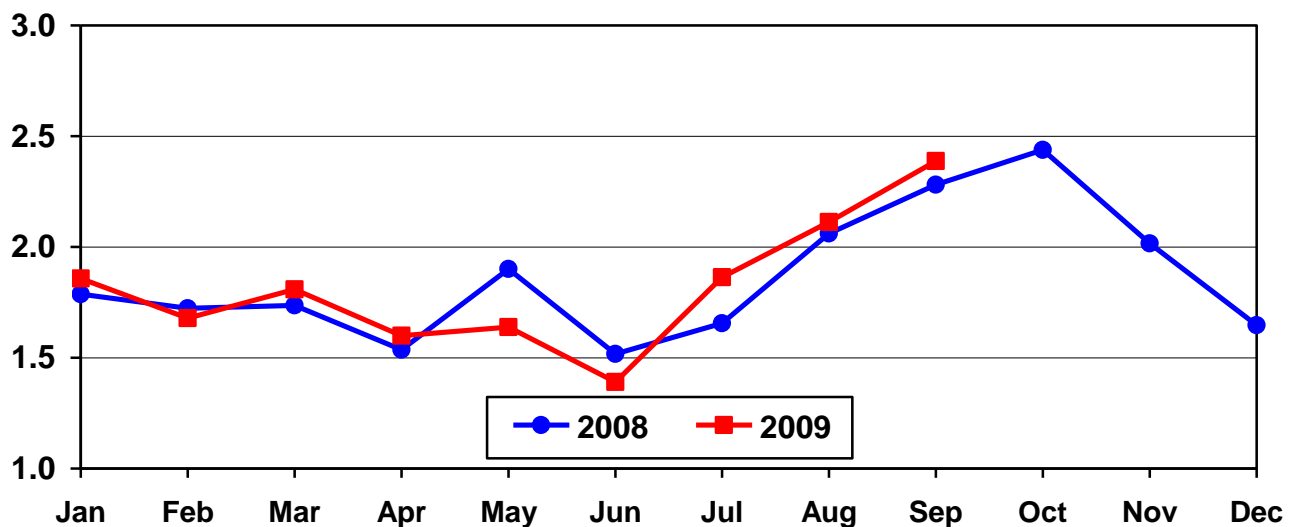
(D) Withheld to avoid disclosing data for individual operations.

(X) Comparison to 2008 is not applicable.

¹ Includes unpublished New Mexico totals for 2009.

United States Cattle on Feed 1,000+ Capacity Feedlots Number Placed

Million Head



**Cattle on Feed: Number Placed on Feed by Weight Group, 1,000+ Capacity
Feedlots, by Month, State, and United States, 2008-2009**

State	During September									
	Under 600		600-699		700-799		800 Plus		Total	
	2008	2009	2008	2009	2008	2009	2008	2009	2008	2009
	<i>1,000 Head</i>	<i>1,000 Head</i>	<i>1,000 Head</i>	<i>1,000 Head</i>	<i>1,000 Head</i>	<i>1,000 Head</i>	<i>1,000 Head</i>	<i>1,000 Head</i>	<i>1,000 Head</i>	<i>1,000 Head</i>
CO	20	20	30	25	45	65	160	150	255	260
KS	80	85	100	115	155	155	150	155	485	510
NE	80	65	70	90	120	120	280	275	550	550
TX	145	175	150	160	130	160	85	75	510	570
Oth Sts	120	145	65	60	91	93	205	200	481	498
US	445	490	415	450	541	593	880	855	2,281	2,388
State	During August									
	Under 600		600-699		700-799		800 Plus		Total	
	2008	2009	2008	2009	2008	2009	2008	2009	2008	2009
	<i>1,000 Head</i>	<i>1,000 Head</i>	<i>1,000 Head</i>	<i>1,000 Head</i>	<i>1,000 Head</i>	<i>1,000 Head</i>	<i>1,000 Head</i>	<i>1,000 Head</i>	<i>1,000 Head</i>	<i>1,000 Head</i>
CO	15	15	20	20	50	50	105	120	190	205
KS	65	60	105	100	190	175	160	215	520	550
NE	60	60	60	80	105	100	220	220	445	460
TX	125	*200	170	140	140	110	75	60	510	*510
Oth Sts	100	100	55	55	81	*78	160	*155	396	*388
US	365	*435	410	395	566	*513	720	*770	2,061	*2,113

* Revised.

**Cattle on Feed: Number Marketed, 1,000+ Capacity Feedlots,
by Month, State, and United States 2008-2009**

State	During Sep 2008	During Aug 2009	During Sep 2009		
			Number	Percent of Previous Year	Percent of Previous Month
	<i>1,000 Head</i>	<i>1,000 Head</i>	<i>1,000 Head</i>	<i>Percent</i>	<i>Percent</i>
AZ	25	27	26	104	96
CA	53	46	44	83	96
CO	150	190	155	103	82
ID	41	40	42	102	105
IA	75	73	94	125	129
KS	400	405	330	83	81
NE	390	350	395	101	113
NM	20	(D)	(D)	(D)	(D)
OK	49	56	48	98	86
SD	44	40	41	93	103
TX	490	*480	485	99	101
WA	24	28	27	113	96
Oth Sts ¹	51	*80	59	(X)	74
US	1,812	*1,815	1,746	96	96

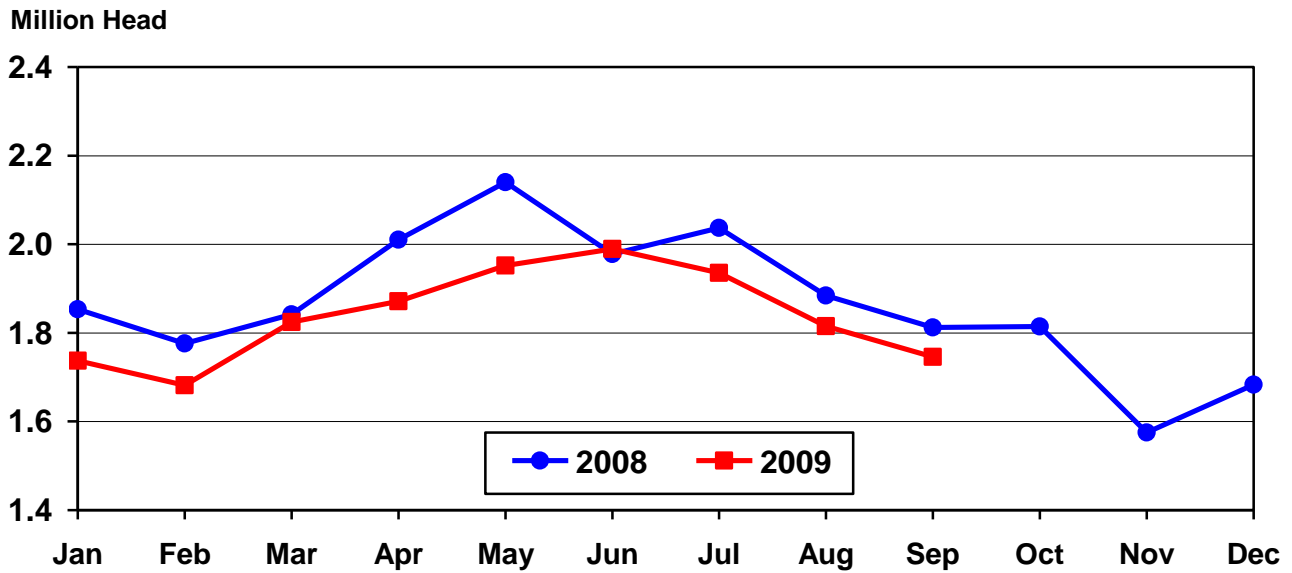
* Revised.

(D) Withheld to avoid disclosing data for individual operations.

(X) Comparison to 2008 is not applicable.

¹ Includes unpublished New Mexico totals for 2009.

United States Cattle on Feed 1,000+ Capacity Feedlots Number Marketed



**Cattle on Feed: Other Disappearance, 1,000+ Capacity Feedlots,
by Month, State, and United States 2008-2009**

State	During Sep 2008	During Aug 2009	During Sep 2009		
			Number	Percent of Previous Year	Percent of Previous Month
	<i>1,000 Head</i>	<i>1,000 Head</i>	<i>1,000 Head</i>	<i>Percent</i>	<i>Percent</i>
AZ	1	1	1	100	100
CA	2	2	2	100	100
CO	5	5	5	100	100
ID	1	2	1	100	50
IA	1	1	1	100	100
KS	15	15	10	67	67
NE	10	10	5	50	50
NM	1	(D)	(D)	(D)	(D)
OK	1	2	2	200	100
SD	2	1	1	50	100
TX	10	10	15	150	150
WA	1	1	1	100	100
Oth Sts ¹	1	*6	3	(X)	50
US	51	*56	47	92	84

* Revised.

(D) Withheld to avoid disclosing data for individual operations.

(X) Comparison to 2008 is not applicable.

¹ Includes unpublished New Mexico totals for 2009.

**Cattle on Feed: Number on Feed by Class, 1,000+ Capacity Feedlots,
by Quarter, State, and United States, 2008-2009**

State	Steers & Steer Calves			Heifers & Heifer Calves			Cows and Bulls		
	Oct 1, 2008	Jul 1, 2009	Oct 1, 2009	Oct 1, 2008	Jul 1, 2009	Oct 1, 2009	Oct 1, 2008	Jul 1, 2009	Oct 1, 2009
	<i>1,000 Head</i>	<i>1,000 Head</i>	<i>1,000 Head</i>	<i>1,000 Head</i>	<i>1,000 Head</i>	<i>1,000 Head</i>	<i>1,000 Head</i>	<i>1,000 Head</i>	<i>1,000 Head</i>
AZ	359	286	272	1	1	1	0	0	2
CA	455	410	410	50	50	55	0	0	0
CO	515	615	650	350	290	305	5	5	5
ID	101	105	113	89	94	91	5	1	1
IA	345	365	365	130	155	155	0	0	0
KS	1,225	970	1,210	920	945	1,005	15	5	5
NE	1,200	1,130	1,240	900	785	915	10	5	15
NM	77	58	(D)	96	36	(D)	0	0	(D)
OK	225	173	215	90	122	140	0	0	0
SD	82	105	100	78	80	81	15	20	14
TX	1,590	1,500	1,520	998	989	1,079	2	1	1
WA	84	80	87	72	65	59	1	1	1
Oth Sts ¹	255	195	234	74	107	126	1	3	2
US	6,513	5,992	6,416	3,848	3,719	4,012	54	41	46

(D) Withheld to avoid disclosing data for individual operations.

¹ Includes unpublished New Mexico totals for October 2009.

Terms and Definitions of Cattle on Feed Estimates

Cattle on feed are animals being fed a ration of grain, silage, hay and/or protein supplement for slaughter market that are expected to produce a carcass that will grade select or better. It excludes cattle being "backgrounded only" for later sale as feeders or later placement in another feedlot.

Placements are cattle put into a feedlot, fed a ration which will produce a carcass that will grade select or better, and are intended for the slaughter market.

Marketings are cattle shipped out of feedlots to a slaughter market.

Other disappearance includes death loss, movement from feedlots to pasture, and shipments to other feedlots for further feeding.

Reliability of Cattle on Feed Estimates

Survey Procedures: During January and July all known feedlots in the U.S. with capacity of 1,000 or more head are surveyed to provide data for cattle on feed estimates. During the other months, all known feedlots from 16 States are surveyed. The 16 States account for 98 percent of the cattle on feed in feedlots with capacity of 1,000 or more head.

Estimating Procedures: These cattle on feed estimates were prepared by the Agricultural Statistics Board after reviewing recommendations and analysis submitted by each State office. Regional and State survey data were reviewed for reasonableness with each other and with estimates from the previous month when setting the current estimates.

Revision Policy: Revisions to previous estimates are made to improve month to month relationships. Estimates for the previous month are subject to revision in all States each month when current estimates are made. In February, all monthly estimates for the previous year, and the number of feedlots and annual marketings from two years ago are reviewed and subject to revisions. The reviews are primarily based on slaughter data, state check-off or brand data, and any other data that may have been received after the original estimate was made. Estimates will also be reviewed after data from the Census of Agriculture are available. No revisions will be made after that date and estimates become final.

Reliability: Since all 1,000+ capacity cattle on feed operators in every State are not included in the monthly survey, survey estimates are subject to sampling variability. Survey results are also subject to non-sampling errors such as omissions, duplications, and mistakes in reporting, recording, and processing the data. The effects of these errors cannot be measured directly. They are minimized through rigid quality controls in the data collection process and through a careful review of all reported data for consistency and reasonableness.

To assist users in evaluating the reliability of estimates in this report, the "**Root Mean Square Error**" is shown for selected items in the following table. The "Root Mean Square Error" is a statistical measure based on past performance and is computed using the differences between first and latest estimates. The "Root Mean Square Error" for cattle on feed inventory estimates over the past 24 months is less than 0.1 percent (0.04). This means that chances are 2 out of 3 that the final estimate will not be above or below the current estimate of 10.5 million head by more than 0.04 percent. Chances are 9 out of 10 that the difference will not exceed 0.1 percent.

The following table also shows a 24 month record of the range of differences between first and latest estimates for selected items. Using estimates of number on feed as an example, changes between the first estimate and the latest estimate during the past 24 months have averaged 2,000 head, ranging from 0 to 18,000 head. During this period the initial estimate has been above the final estimate 3 times and has been below the final estimate 5 times. This does not imply that the initial estimate is likely to understate or overstate final inventory.

Reliability of Monthly Cattle on Feed Estimates ¹

Item	Root Mean Square Error	90% Confidence Level		Difference Between First and Final Estimates			Number of Months	
		Percent	(000) Head	Average	Smallest	Largest	First Above Final	First Below Final
	<i>Percent</i>	<i>Percent</i>	<i>1,000 Head</i>	<i>1,000 Head</i>	<i>1,000 Head</i>	<i>1,000 Head</i>	<i>Number</i>	<i>Number</i>
Number on Feed	0.0	0.1	10.5	2	0	18	3	5
Placements	0.2	0.3	7.2	2	0	10	2	7
Marketings	0.2	0.3	5.2	2	0	10	4	4

¹ Based on data for the past 24 months.

Information Contacts

Listed below are the commodity specialists in the Livestock Branch of the National Agricultural Statistics Service to contact for additional information.

Dan Kerestes, Chief, Livestock Branch (202) 720-3570

Livestock Section

Scott Hollis, Head, Livestock Section (202) 690-2424
 Jim Collom - Dairy Products (202) 690-3236
 Joe Gaynor - Dairy Products Prices (202) 690-2168
 Jason Hardegree - Cattle, Cattle on Feed (202) 720-3040
 Sherry Bertramsen - Livestock Slaughter (515) 284-4340
 Everett Olbert - Sheep and Goats (202) 720-4751
 Mike Miller - Milk Production and Milk Cows (202) 720-3278
 Nick Streff - Hogs and Pigs (202) 720-3106

ACCESS TO REPORTS!!

For your convenience, there are several ways to obtain NASS reports, data products, and services:

INTERNET ACCESS

All NASS reports are available free of charge. For free access, connect to the Internet and go to the NASS Home Page at: www.nass.usda.gov.

E-MAIL SUBSCRIPTION

All NASS reports are available by subscription free of charge direct to your e-mail address. Starting with the NASS Home Page at www.nass.usda.gov, under the right navigation, *Receive reports by Email*, click on **National** or **State**. Follow the instructions on the screen.

PRINTED REPORTS OR DATA PRODUCTS

CALL OUR TOLL-FREE ORDER DESK: 800-999-6779 (U.S. and Canada)
Other areas, please call 703-605-6220 FAX: 703-605-6880
(Visa, MasterCard, check, or money order acceptable for payment.)

ASSISTANCE

For **assistance** with general agricultural statistics or further information about NASS or its products or services, contact the **Agricultural Statistics Hotline** at **800-727-9540**, 7:30 a.m. to 4:00 p.m. ET, or e-mail: nass@nass.usda.gov.

The U.S. Department of Agriculture (USDA) prohibits discrimination in all its programs and activities on the basis of race, color, national origin, age, disability, and where applicable, sex, marital status, familial status, parental status, religion, sexual orientation, genetic information, political beliefs, reprisal, or because all or a part of an individual's income is derived from any public assistance program. (Not all prohibited bases apply to all programs.) Persons with disabilities who require alternative means for communication of program information (Braille, large print, audiotape, etc.) should contact USDA's TARGET Center at (202) 720-2600 (voice and TDD).

To file a complaint of discrimination, write to USDA, Director, Office of Civil Rights, 1400 Independence Avenue, S.W., Washington, D.C. 20250-9410, or call (800) 795-3272 (voice) or (202) 720-6382 (TDD). USDA is an equal opportunity provider and employer.

**USDA Data Users' Meeting
Monday, November 2, 2009**

**Crowne Plaza Hotel Chicago-Metro
Chicago, Illinois 60661
(312) 829-5000**

The USDA's National Agricultural Statistics Service will be organizing an open forum for data users. The purpose will be to provide updates on pending changes in the various statistical and information programs and seeks comments and input from data users. Other USDA agencies to be represented will include the Agricultural Marketing Service, the Economic Research Service, the Foreign Agricultural Service, and World Agricultural Outlook Board. The Foreign Trade Division from the Census Bureau will also be included in the meeting.

For registration details or additional information for the Data Users' Meeting, see the NASS homepage at www.nass.usda.gov/forum/ or contact Marjorie Taylor (NASS) at (202) 690-8141 or at marjorie_taylor@nass.usda.gov.

This Data Users' Meeting precedes an Industry Outlook Conference that will be held at the same location on Tuesday, November 3, 2009. The Outlook Conference brings together analysts from various commodity sectors to discuss the outlook situation. For registration details or additional information for the Industry Outlook Meeting see the Livestock and Marketing Information Center (LMIC) homepage at www.lmic.info or contact Jim Robb at (720) 544-2941 or at robb@lmic.info.